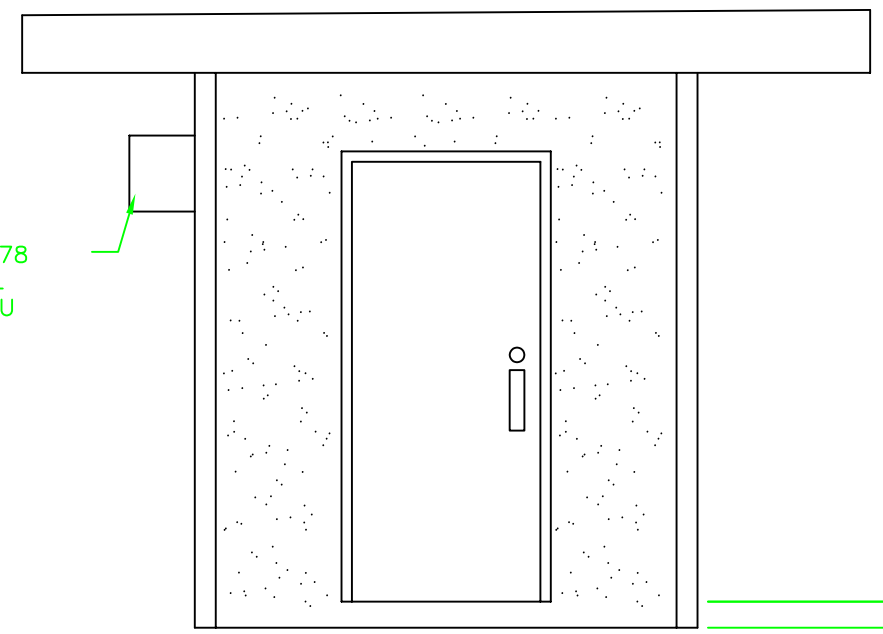
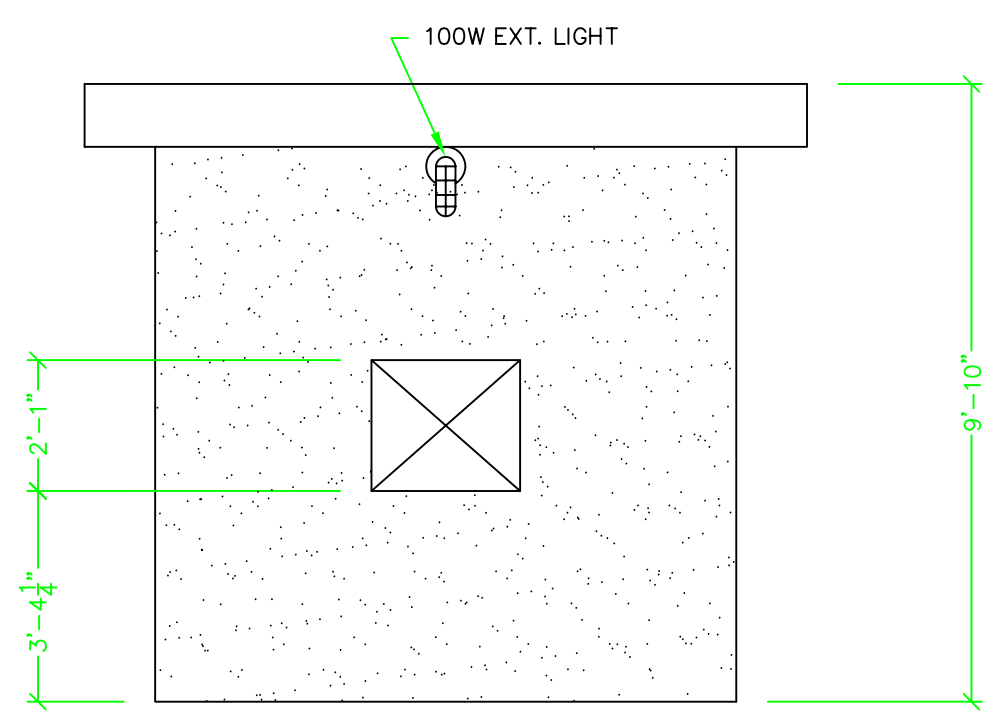


FRIGIDAIRE 4CE78  
THRU THE WALL  
HEAT/COOL ACU



LEFT ELEVATION



FRONT ELEVATION

DOOR AND HARDWARE SCHEDULE

- \* DOORS: 3'0x7'0x1 3/4" 18GA STEEL
- FRAMES: 3'0x7'0x3 3/4" 16GA STEEL
- HINGES: (3) HAGER BB1279 NRP
- LOCKS: SCHLAGE BC160 626 DEADBOLT
- THRESHOLD: PEMKO 185AV
- DRIP CAP: PEMKO 346C
- CLOSER: LCN 4041

\* OPTIONAL DIAMOND PLATE WILL BE INSTALLED OVER EXT. SURFACE OF DOOR.

EXTERIOR FINISH SCHEDULE:

- EXTERIOR WALLS:  
EXPOSED AGGREGATE RIVER ROCK  
(2) COATS DYCO CLEAR SEALER
- DOORS AND FRAMES:  
(2) COATS RICHARDS  
GLOSS ENAMEL  
COLOR: MESA TAN

INTERIOR FINISH SCHEDULE:

- WALLS AND CEILING:  
(2) COATS DYCO INTERIOR  
ACRYLIC FLAT  
COLOR: WHITE
- FLOOR:  
(2) COATS DYCO FLOOR PAINT  
COLOR: SILVER GRAY

THIS DOCUMENT CONTAINS PROPRIETARY INFORMATION OF A to Z PRECAST CONCRETE PRODUCTS  
NO DISCLOSURE, REPRODUCTION, OR USE OF ANY PART THEREOF MAY BE MADE EXCEPT BY WRITTEN PERMISSION

**AZ** PRECAST CONCRETE PRODUCTS  
4451 8TH AVE. SOUTH, ST. PETERSBURG, FLORIDA 33711  
TEL: (727) 321-6000 FAX: (727) 328-2234 WWW.ATOZPRECAST.COM

TITLE: ATM SHELTER  
LOCATION:  
FOR: TRANSACT PAYMENT SYSTEMS

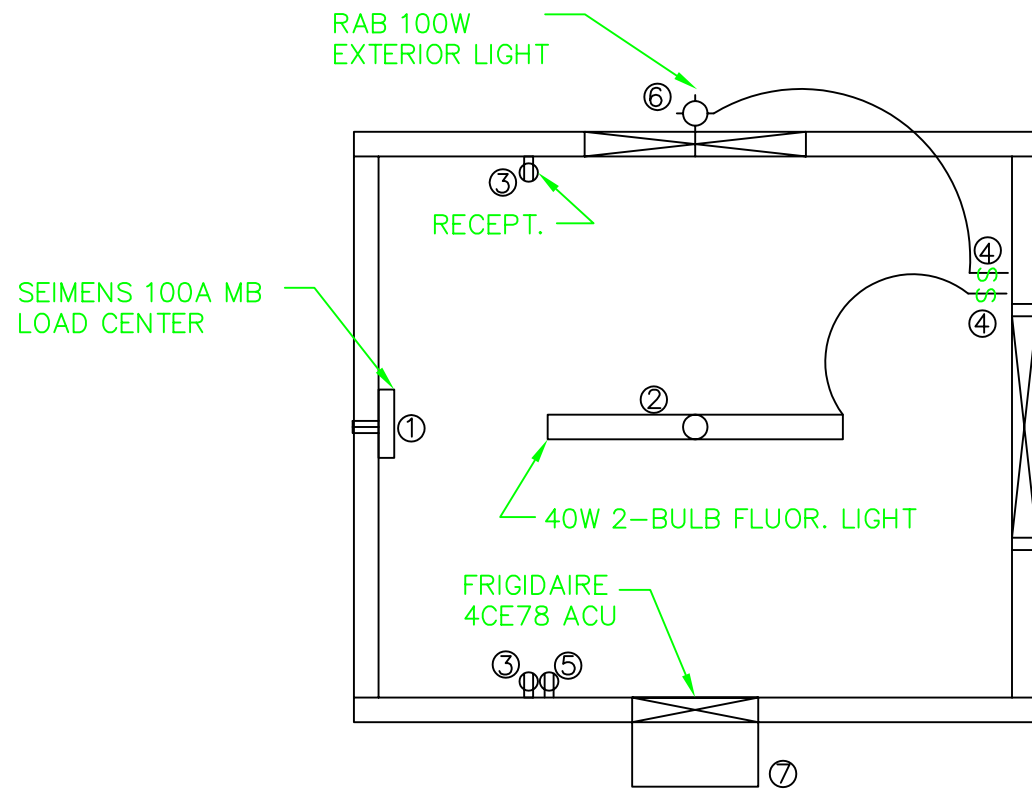
BLDG. NO.  
B0895  
SCALE: 1/2"=1'

DWG NO.  
0895B2  
SHEET 2 OF 8

DRAWN: DATE:  
MW 2/2/05  
REVISION: K.W.

CHECKED: DATE:  
DATE: 4-5-05





EL 11 ELECTRICAL PLAN

EQUIPMENT LIST:				
	QTY	MANUF.	PART NO.	DESCRIPTION
①	(1)	SIEMENS	G1224B110CU	100 AMP 12 SPACE 1 PHASE LOAD CENTER
②	(1)	LITHONIA	3GU85	INTERIOR LIGHT FIXTURE
③	(2)	EAGLE	CR20W	20A 125V RECEPTACLES
④	(2)	EAGLE	CS120W	20A 120V SWITCHES
⑤	(1)	EAGLE	1876-W	20A 250V BIPOLAR RECEPTACLES
⑥	(1)	RAB	VXBR100DG	EXTERIOR LIGHT FIXTURE
⑦	(1)	FRIGIDAIRE	4CE78	BTU 10,000/9800 AC/HEAT UNIT

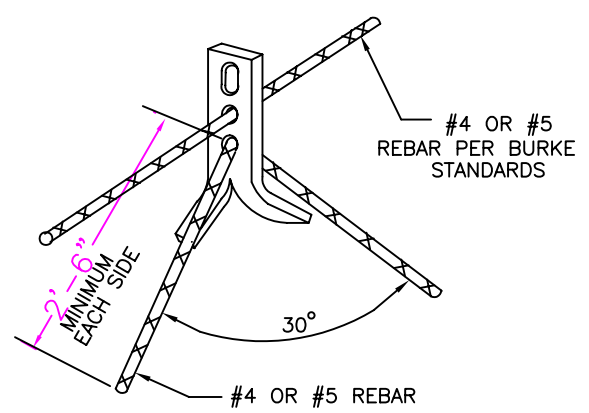
**GENERAL ELECTRICAL NOTES:**

- ALL WORK SHALL BE IN ACCORDANCE WITH NATIONAL ELECTRICAL CODE AND SHALL ALSO COMPLY WITH WITH APPLICABLE RULES AND REGULATIONS OF LOCAL AND STATE LAWS AND ORDINANCES.
- CIRCUITS 600V OR LESS SHALL USE COPPER CONDUCTORS ONLY: #10 AWG AND SMALLER SHALL BE SOLID, AND #8 AWG THRU #2 SHALL BE STRANDED WITH TYPE THHN/THWN 75-C INSULATION
- ROUTE CONDUITS TO SUIT EQUIPMENT AND BUILDING STRUCTURE. CONDUITS TO BE GALVANIZED EMT. FLEXIBLE CONDUIT MAY BE USED BETWEEN JUNCTION BOXES TO CONNECT MODULES TOGETHER. SURFACE MOUNT AND SUPPORT PER NEC.
- SEAL CONDUIT PENETRATIONS THRU WALLS WITH GROUT OR CAULK. USE A METHOD OF SEALING THAT IS UL APPROVED.
- ALL INTERIOR ELECTRICAL SYSTEM SHALL BE COMPLETELY AND EFFECTIVELY GROUNDED AS REQUIRED BY THE NATIONAL ELECTRICAL CODE. ALL METALLIC RACEWAYS SHALL BE MECHANICALLY AND ELECTRICALLY SECURE AT ALL BOXES, CABINETS, FITTINGS AND EQUIPMENT.
- COLOR CODE ALL CONDUCTORS AS REQUIRED BY THE NEC.
- ALL RACEWAYS WITH #10 OR #12 AWG PHASE CONDUCTORS SHALL BE PROVIDED WITH A PARITY SIZED GREEN EQUIPMENT GROUND CONDUCTOR. GROUND CONDUCTOR SHALL BE INSTALLED IN ENTIRE RACEWAY SYSTEM AND SHALL BE CONNECTED TO GROUND BUS IN PANELBOARD.

AC PANEL SCHEDULE							
100 AMP 120/240VAC 12 SPACE 1Ø MAIN BREAKER							
CKT #	DESCRIPTION	WIRE SIZE	AMP	AMP	WIRE SIZE	DESCRIPTION	CKT #
1	ACU	12	20(2P)	20	12	ATM RECEPT.	2
3	ACU	12	20(2P)	20	12	RIGHT RECEPT.	4
5	INT. LIGHT	12	20	20	12	SPARE	6
7	EXT. LIGHT	12	20	20	12	SPARE	8
9	SPACE					SPACE	10
11	SPACE					SPACE	12

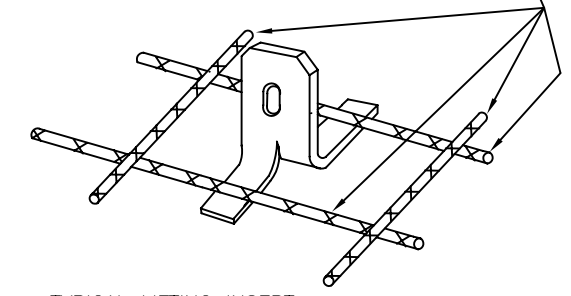
MINIMUM A.I.C. RATING OF CIRCUIT BREAKERS SHALL BE 10,000 @ 240V

REV. NO.	DESCRIPTION:	DATE:	BY:



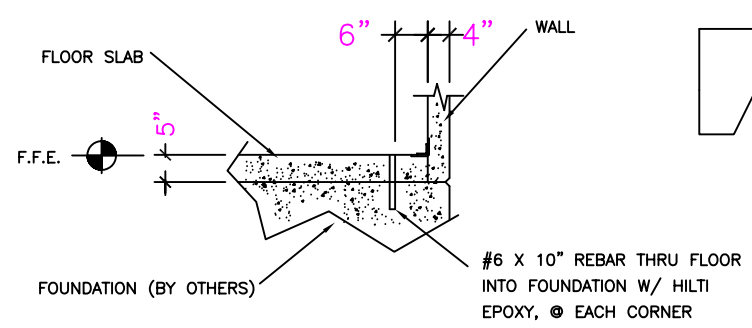
TYPICAL REINFORCING FOR 2-TON BURKE TYPE EDGE ANCHOR

REINFORCEMENT:  
LONGITUDINAL AND TRANSVERSE REBAR; SIZE AS SHOWN ON FLOOR AND (OR) ROOF PLAN.

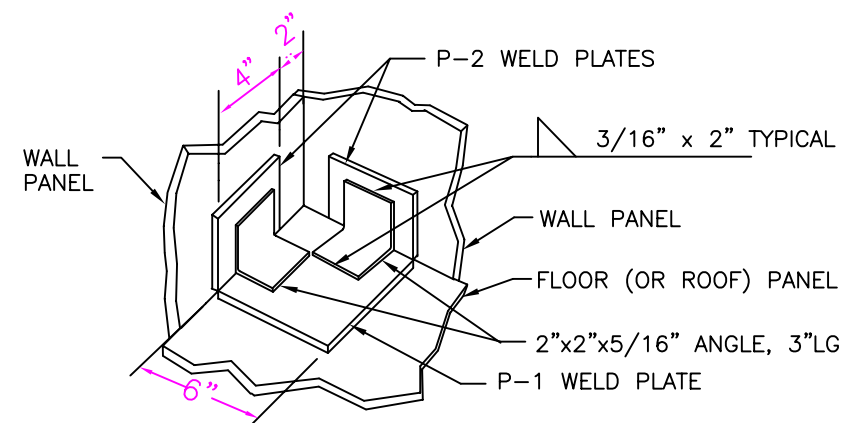


TYPICAL LIFTING INSERT FOR "FACE LIFT" APPLICATION

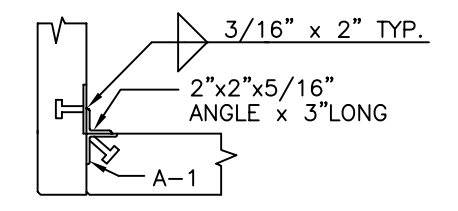
LIFTING INSERT DETAILS



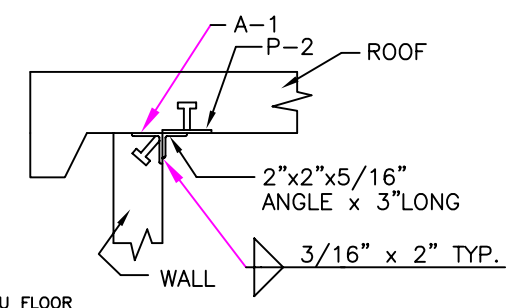
PINNING DETAILS



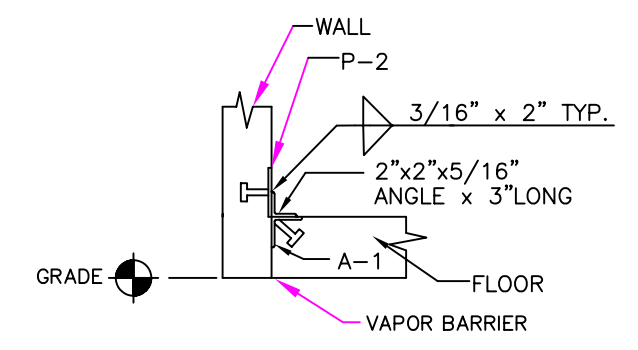
FLOOR/WALL CORNER PLATE ATTACHMENT (CEILING/WALL SIMILAR)



SECTION-WALL/WALL



SECTION-ROOF/WALL

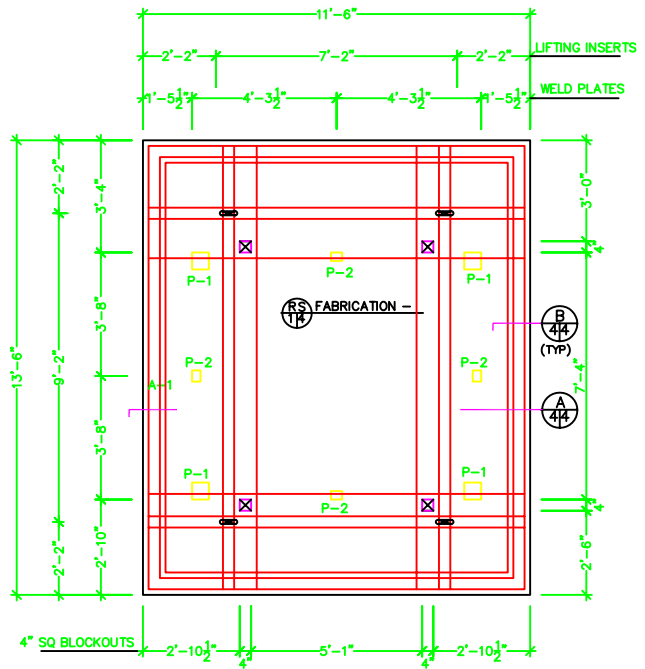


SECTION-FLOOR/WALL

CONNECTION DETAILS

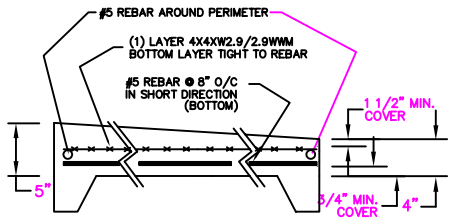
NOTE:  
ALL INTERIOR AND EXTERIOR JOINTS TO BE CAULKED W/ HILTI CS-2130 POLYURETHANE SEALANT

WELD PLATE AND ANGLE SCHEDULE			
QUAN.	MARK#	SIZE OF MATERIAL	STUD REQUIRED
	P-1	6"x 6"x 3/8" STL. PLATE	(4) 1/2" DIA x 3" LG.
	P-2	4"x 3"x 1/4" STL. PLATE	(2) 1/2" DIA x 3" LG.
	A-1	2-1/2"x 2-1/2"x 1/4" ANG. x 4" LONG	(2) 1/2" DIA x 3" LG.

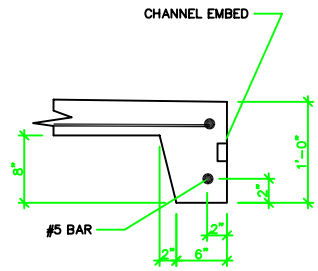


RS 1/4 FABRICATION - 5"-4" THICK SLOPED ROOF SLAB

**REINFORCEMENT:**  
 (1) LAYER 4X4XW2.9/W2.9 WMM (MIN. LAP 8") (TOP)  
 (1) #5 REBAR EACH SIDE OF LIFTING INSERTS, EACH WAY  
 #5 REBAR @ 8" O/C IN BOTH DIRECTIONS (BOTTOM)



B 4/4 ROOF SLAB SECTION  
NTS



B 4/4 ROOF SLAB SECTION  
NTS

**AZ** PRECAST CONCRETE PRODUCTS  
 4451 8TH AVE. SOUTH, ST. PETERSBURG, FL 33711  
 TEL: (727) 321-6000 FAX: (727) 328-2234 WWW.AZPCRECAST.COM

TITLE: ATM SHELTER  
 LOCATION:  
 FOR: TRANSACT PAYMENT SYSTEMS

PROJECT NO.  
B0895

DWG NO.  
0895B6

DRAWN: MW  
DATE: 7/26/04

CHECKED:  
DATE: 4-5-05

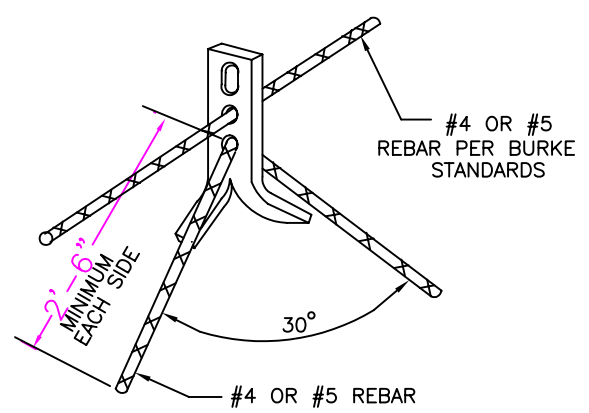
SIGNED:

SCALE: 1/2"=1'

SHEET 6 OF 8

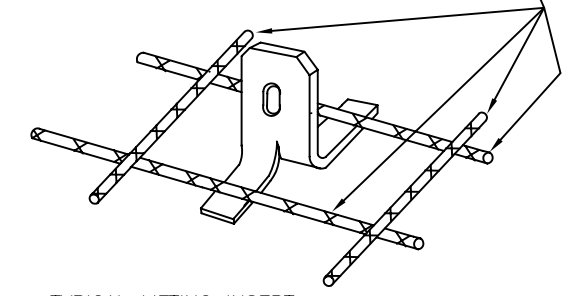
REVISION: K.W.

REV. NO.	DESCRIPTION:	DATE:	BY:



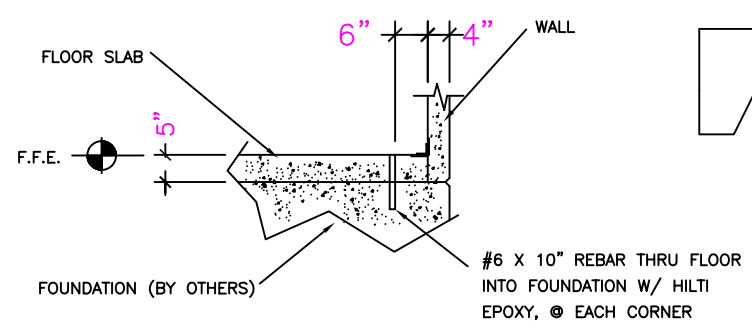
TYPICAL REINFORCING FOR 2-TON BURKE TYPE EDGE ANCHOR

REINFORCEMENT:  
LONGITUDINAL AND TRANSVERSE REBAR; SIZE AS SHOWN ON FLOOR AND (OR) ROOF PLAN.

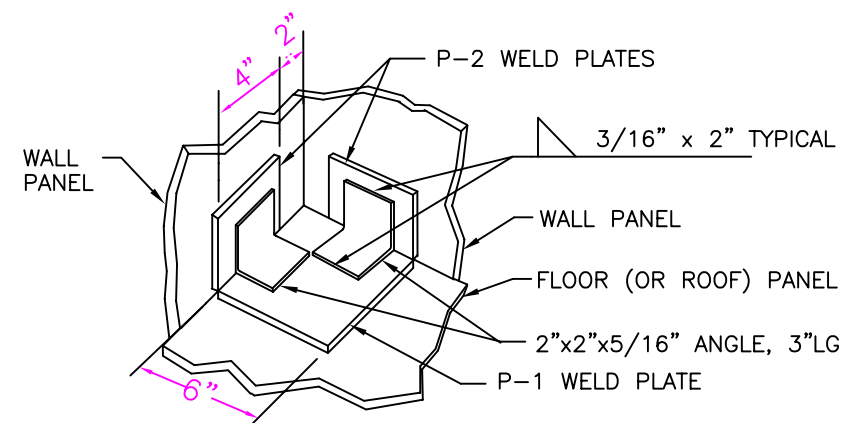


TYPICAL LIFTING INSERT FOR "FACE LIFT" APPLICATION

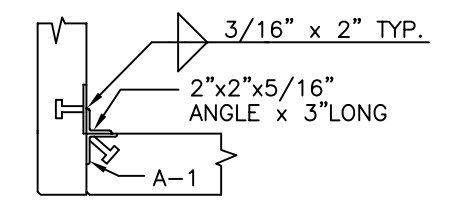
LIFTING INSERT DETAILS



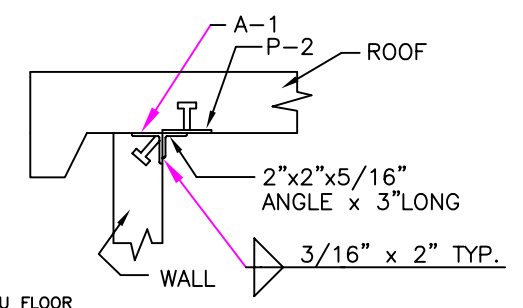
PINNING DETAILS



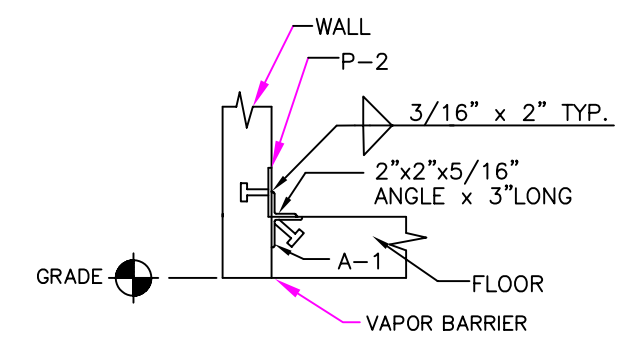
FLOOR/WALL CORNER PLATE ATTACHMENT (CEILING/WALL SIMILAR)



SECTION-WALL/WALL



SECTION-ROOF/WALL

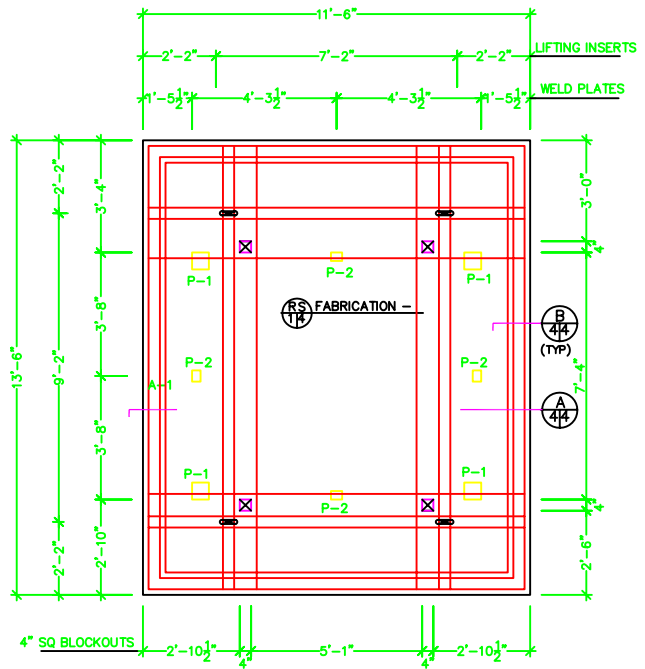


SECTION-FLOOR/WALL

CONNECTION DETAILS

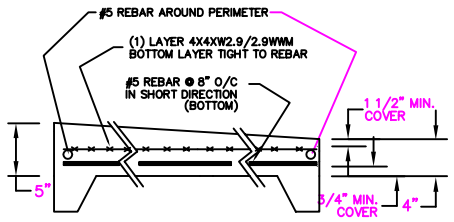
NOTE:  
ALL INTERIOR AND EXTERIOR JOINTS TO BE CAULKED W/ HILTI CS-2130 POLYURETHANE SEALANT

WELD PLATE AND ANGLE SCHEDULE			
QUAN.	MARK#	SIZE OF MATERIAL	STUD REQUIRED
	P-1	6"x 6"x 3/8" STL. PLATE	(4) 1/2" DIA x 3" LG.
	P-2	4"x 3"x 1/4" STL. PLATE	(2) 1/2" DIA x 3" LG.
	A-1	2-1/2"x 2-1/2"x 1/4" ANG. x 4" LONG	(2) 1/2" DIA x 3" LG.

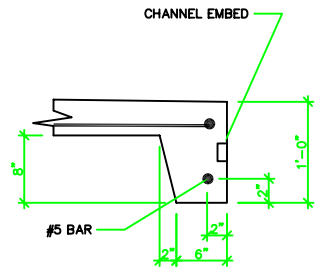


RS  
14 FABRICATION - 5"-4" THICK SLOPED ROOF SLAB

**REINFORCEMENT:**  
 (1) LAYER 4X4XW2.9/W2.9 WMM (MIN. LAP 8") (TOP)  
 (1) #5 REBAR EACH SIDE OF LIFTING INSERTS, EACH WAY  
 #5 REBAR @ 8" O/C IN BOTH DIRECTIONS (BOTTOM)



B  
4/4 ROOF SLAB SECTION  
NTS



B  
4/4 ROOF SLAB SECTION  
NTS

**AZ** PRECAST CONCRETE PRODUCTS  
 4451 8TH AVE. SOUTH, ST. PETERSBURG, FL 33711  
 TEL: (727) 321-6000 FAX: (727) 328-2234 WWW.AZPCRECAST.COM

TITLE: ATM SHELTER  
 LOCATION:  
 FOR: TRANSACT PAYMENT SYSTEMS

PROJECT NO.  
B0895

DWG NO.  
0895B6

DRAWN: MW DATE: 7/26/04

CHECKED: DATE:

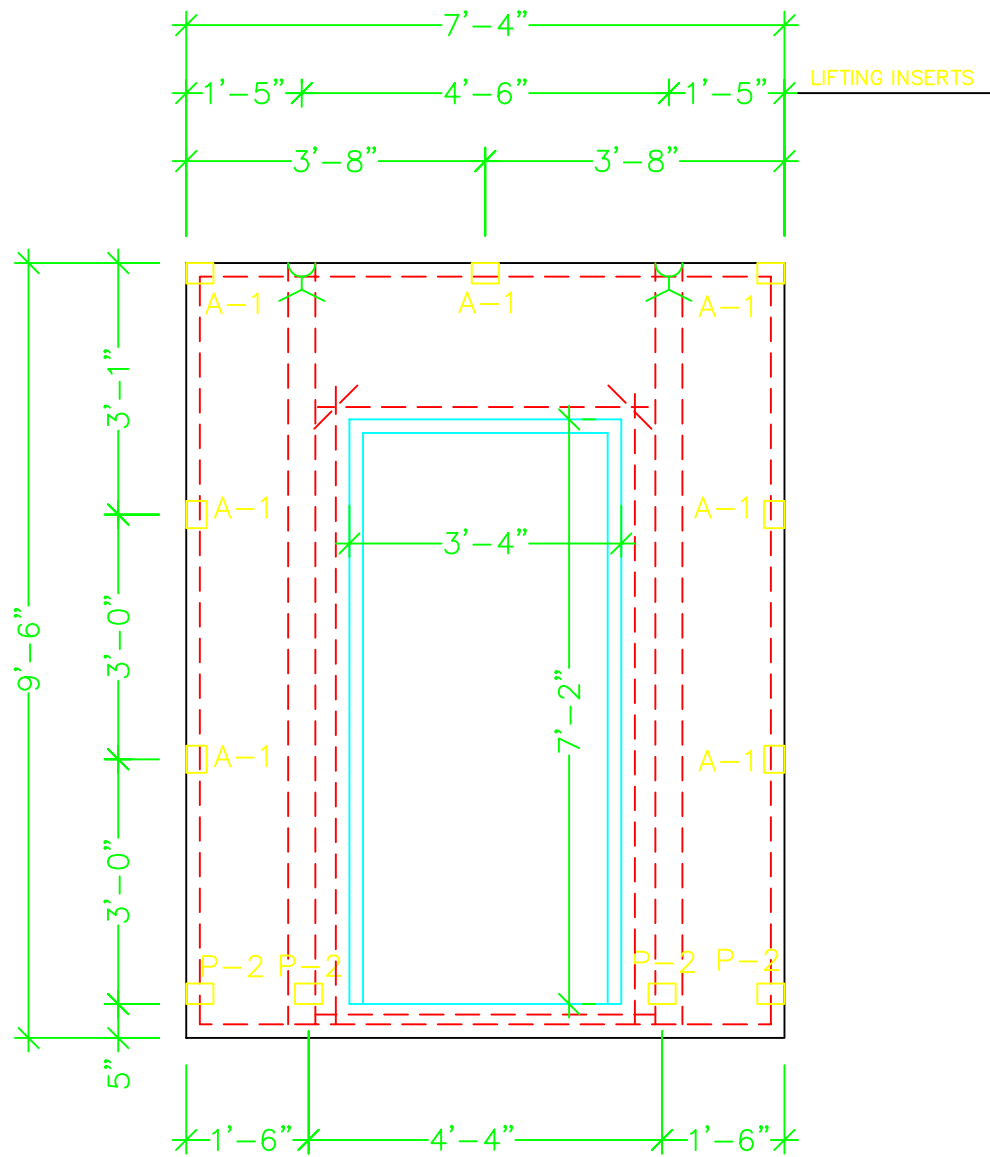
SIGNED:

SCALE: 1/2"=1'

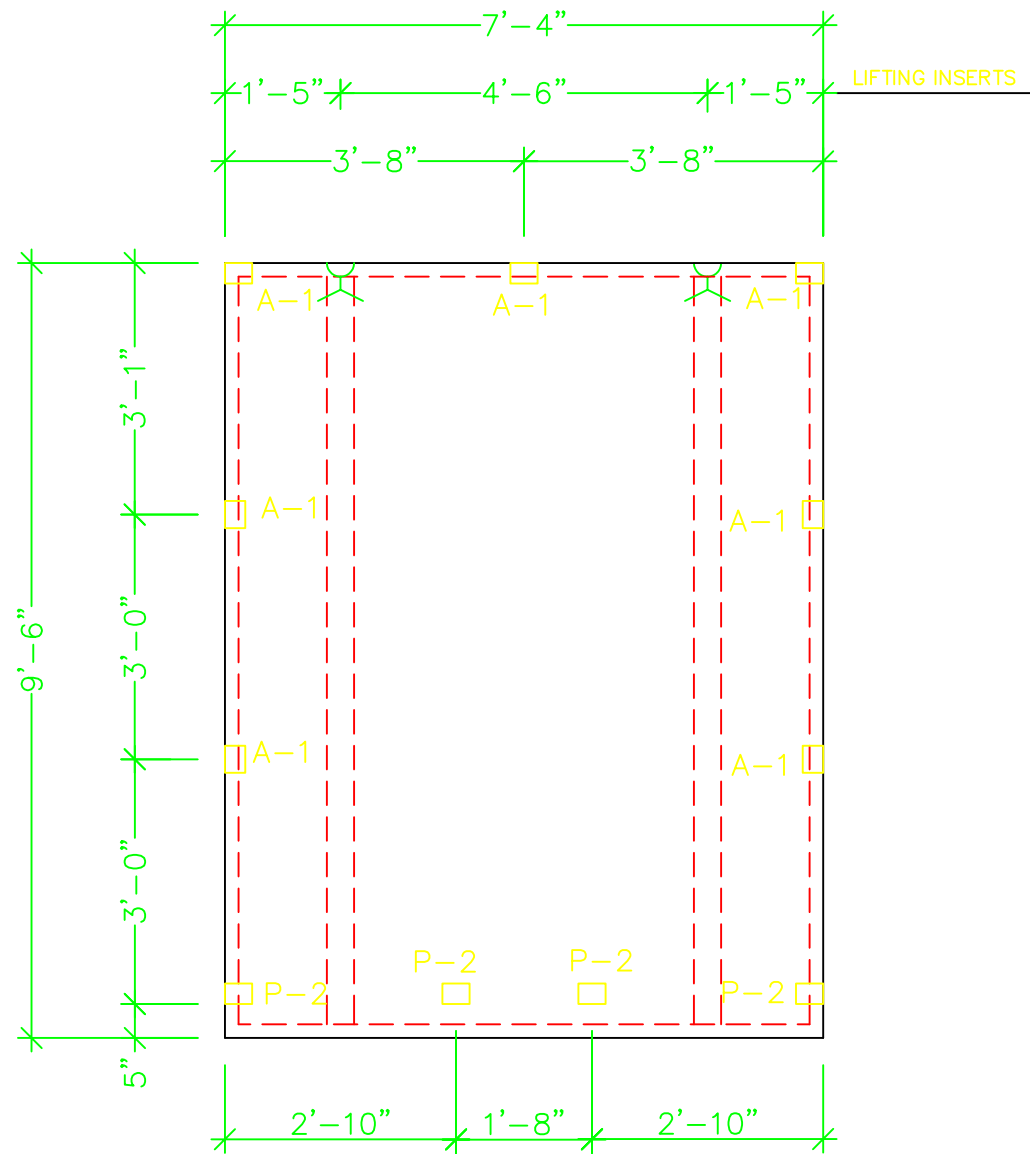
SHEET 6 OF 8

REVISION: K.W.

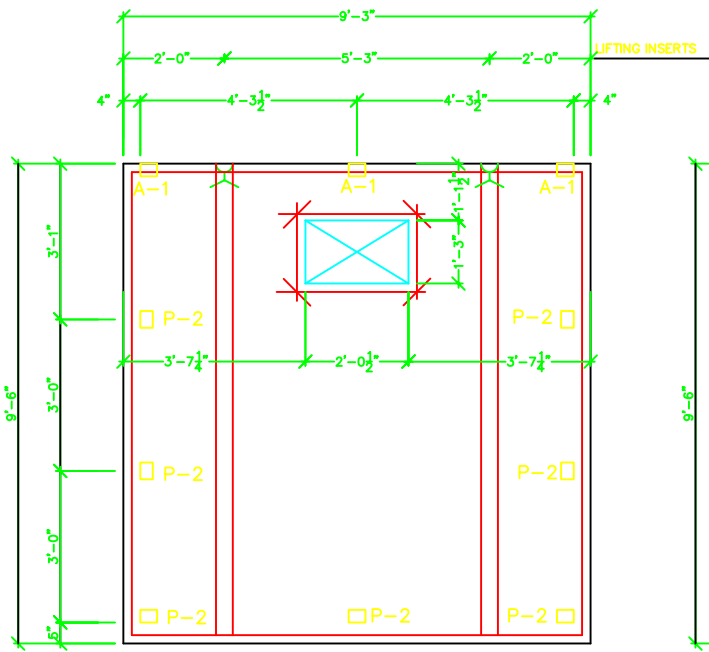
DATE: 4-5-05



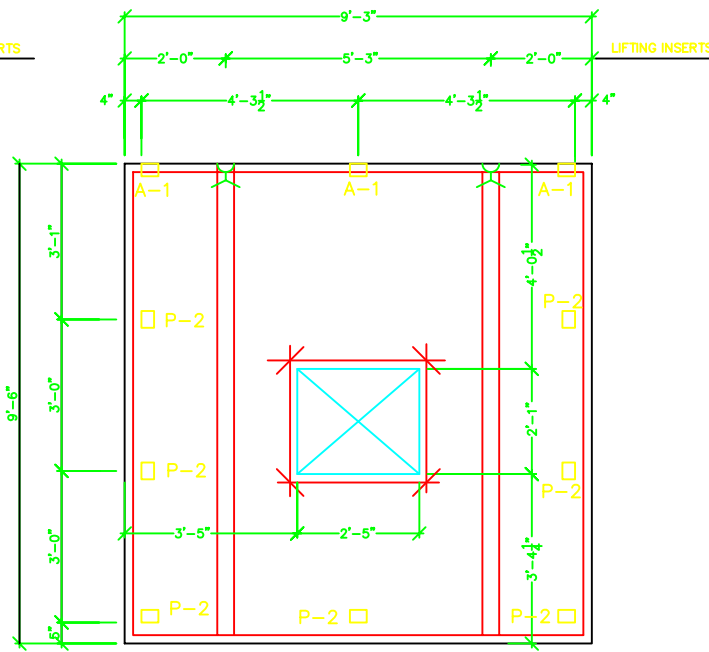
LW FABRICATION - 4" THICK WALL PANEL



RW FABRICATION - 4" THICK WALL PANEL



**BW** FABRICATION - 4" THICK WALL PANEL



**FW** FABRICATION - 4" THICK WALL PANEL

**AZ** PRECAST CONCRETE PRODUCTS  
 4451 8TH AVE. SOUTH, ST. PETERSBURG, FL 33711  
 TEL: (727) 321-6000 FAX: (727) 328-2234 WWW.AZPCRECAST.COM

TITLE: ATM SHELTER  
 LOCATION:  
 FOR: TRANSACT PAYMENT SYSTEMS

PROJECT NO.  
 B0895

DWG NO.  
 0895B4

DRAWN: MW  
 DATE: 2/2/05

CHECKED: DATE:

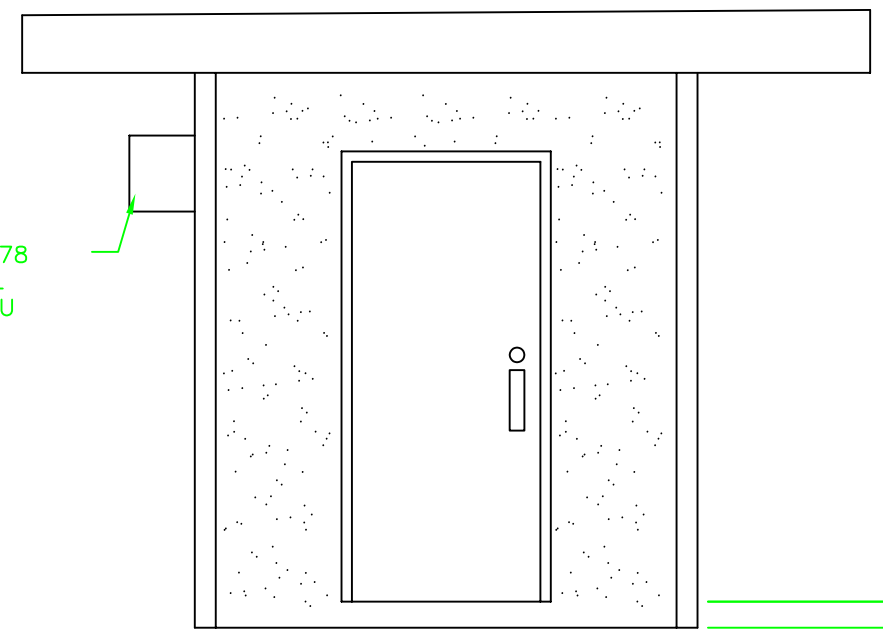
SCALE: 1/2"=1'

SHEET 4 OF 8

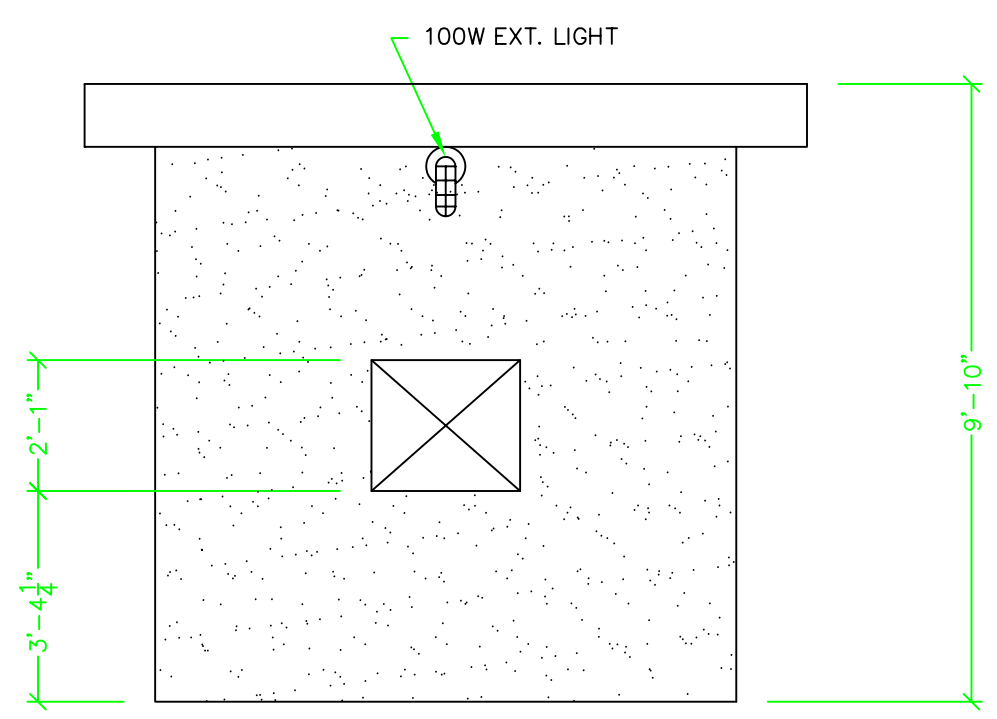
REVISION: K.W.

DATE: 4-5-05

FRIGIDAIRE 4CE78  
THRU THE WALL  
HEAT/COOL ACU



LEFT ELEVATION



FRONT ELEVATION

DOOR AND HARDWARE SCHEDULE

- \* DOORS: 3'0x7'0x1 3/4" 18GA STEEL
- FRAMES: 3'0x7'0x3 3/4" 16GA STEEL
- HINGES: (3) HAGER BB1279 NRP
- LOCKS: SCHLAGE BC160 626 DEADBOLT
- THRESHOLD: PEMKO 185AV
- DRIP CAP: PEMKO 346C
- CLOSER: LCN 4041

\* OPTIONAL DIAMOND PLATE WILL BE INSTALLED OVER EXT. SURFACE OF DOOR.

EXTERIOR FINISH SCHEDULE:

- EXTERIOR WALLS:  
EXPOSED AGGREGATE RIVER ROCK  
(2) COATS DYCO CLEAR SEALER
- DOORS AND FRAMES:  
(2) COATS RICHARDS  
GLOSS ENAMEL  
COLOR: MESA TAN

INTERIOR FINISH SCHEDULE:

- WALLS AND CEILING:  
(2) COATS DYCO INTERIOR  
ACRYLIC FLAT  
COLOR: WHITE
- FLOOR:  
(2) COATS DYCO FLOOR PAINT  
COLOR: SILVER GRAY

THIS DOCUMENT CONTAINS PROPRIETARY INFORMATION OF A to Z PRECAST CONCRETE PRODUCTS  
NO DISCLOSURE, REPRODUCTION, OR USE OF ANY PART THEREOF MAY BE MADE EXCEPT BY WRITTEN PERMISSION

**AZ** PRECAST CONCRETE PRODUCTS  
4451 8TH AVE. SOUTH, ST. PETERSBURG, FLORIDA 33711  
TEL: (727) 321-6000 FAX: (727) 328-2234 WWW.ATOZPRECAST.COM

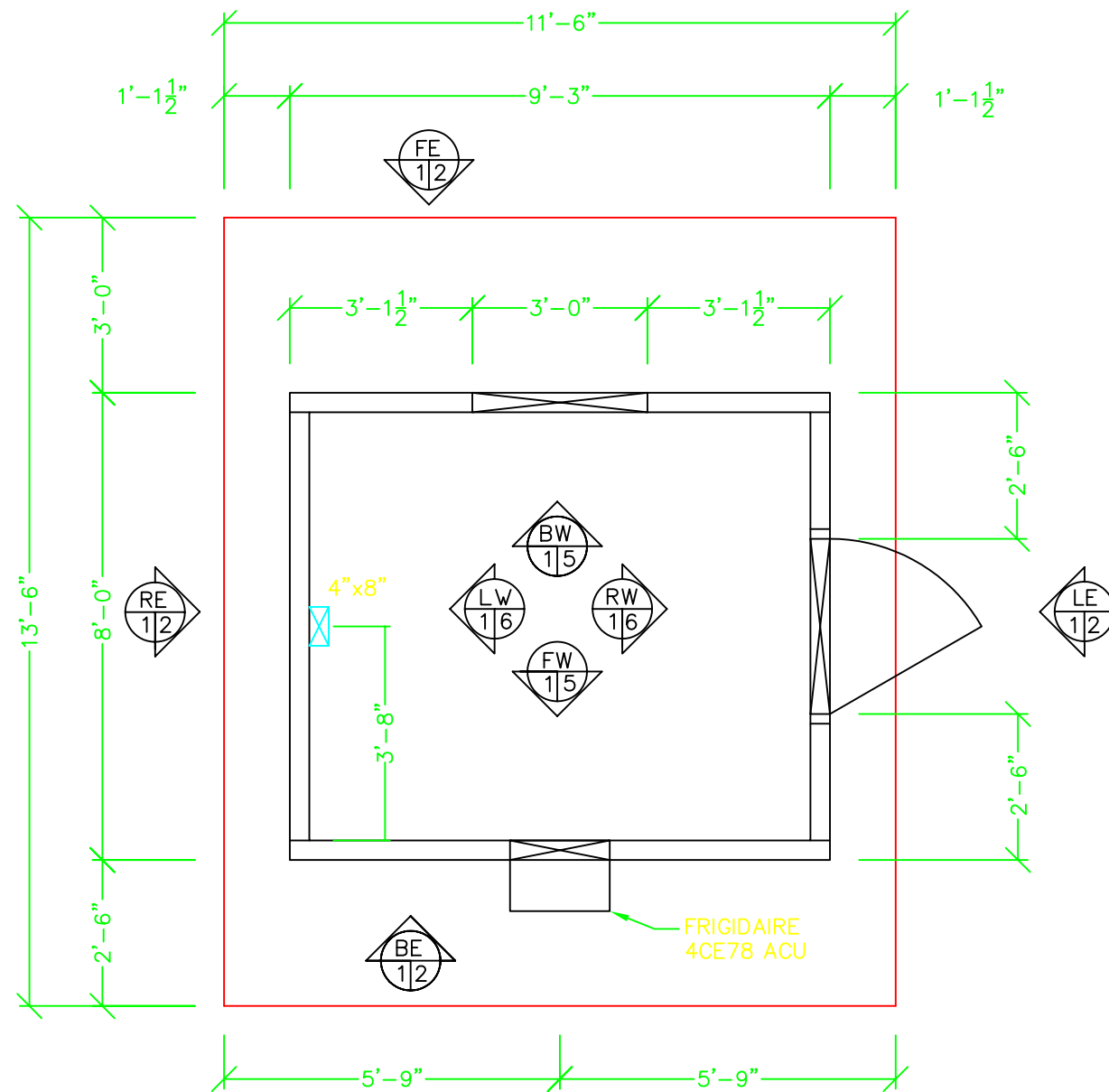
TITLE: ATM SHELTER  
LOCATION:  
FOR: TRANSACT PAYMENT SYSTEMS

BLDG. NO.  
B0895  
SCALE: 1/2"=1'

DWG NO.  
0895B2  
SHEET 2 OF 8

DRAWN: DATE:  
MW 2/2/05  
REVISION: K.W.

CHECKED: DATE:  
DATE: 4-5-05



**NOTES**

- A. DESIGN CRITERIA
  1. 2001 FLORIDA BUILDING CODE
  2. ACI-318-99 / 318R-99
  3. DESIGN SOIL PRESSURE: 2000 PSF TO BE PROVIDED BY OTHERS
- B. DESIGN LOADING
  1. ROOF LIVE LOAD - 60 PSF
  2. FLOOR LIVE LOAD - 125 PSF
  3. WIND LOAD - 120 MPH
- C. DESIGN SPECIFICATION ON MATERIAL
  1. CONCRETE - LIGHTWEIGHT, 5000 PSI, 28 DAYS
  2. REINF. STEEL - ASTM A615, GRADE 60  
MINIMUM LAP - 30"
  3. MINIMUM COVER - EXTERIOR - 1 1/4"  
INTERIOR - 3/4"
  4. WELDED WIRE FABRIC - ASTM A185,  
MIN. LAP 8". ALTERNATE JOINTS IN PANEL  
W/ DOUBLE MESH
  5. ERECTION/LIFTING INSERTS/DEVICES SHALL  
BE INSTALLED PER MFR'S RECOMMENDATIONS
  6. ALL ERECTION/LIFTING DEVICES SHALL BE  
2-TON CAPACITY
- D. OTHER
  1. REFER TO OWNER'S PROJECT REQUIREMENTS  
FOR SPECIFICATIONS ON BUILDING COMPONENTS  
(WINDOWS, DOORS, EQUIPMENT BASES,  
LOUVERS); HVAC EQUIPMENT (A/C, EXHAUST  
FANS); PLUMBING FIXTURES (PIPES, DRAINS);  
ELECTRICAL EQUIPMENT (POWER PANELS,  
CONDUITS, SWITCHES, LIGHTING FIXTURES), ETC.  
NOTE: IT IS THE CONTRACTOR'S RESPONSIBILITY  
TO SUPPLY A TO Z PRECAST CONCRETE PRODS.  
WITH THE EXACT SIZE AND LOCATION OF ALL  
OPENINGS REQUIRED IN THE FLOOR, WALL AND  
ROOF PANELS. THE ITEMS LISTED ABOVE ARE  
NOT TO BE CONSTRUED AS AN ALL INCLUSIVE  
LIST.
  2. SEE NOTE ON SHEET 3 FOR FOUNDATION  
REQUIREMENTS TO BE PROVIDED BY OTHERS

FP 1/1 FLOOR PLAN - 13'-6"x11'-6"x10'-0"H  
PRECAST CONCRETE STRUCTURE

THIS DOCUMENT CONTAINS PROPRIETARY INFORMATION OF  
A to Z PRECAST CONCRETE PRODUCTS  
NO DISCLOSURE, REPRODUCTION, OR USE OF ANY PART  
THEREOF MAY BE MADE EXCEPT BY WRITTEN PERMISSION

**A to Z PRECAST CONCRETE PRODUCTS**  
4451 8TH AVE. SOUTH, ST. PETERSBURG, FLORIDA 33711  
TEL: (727) 321-6000 FAX: (727) 328-2234 WWW.ATOZPRECAST.COM

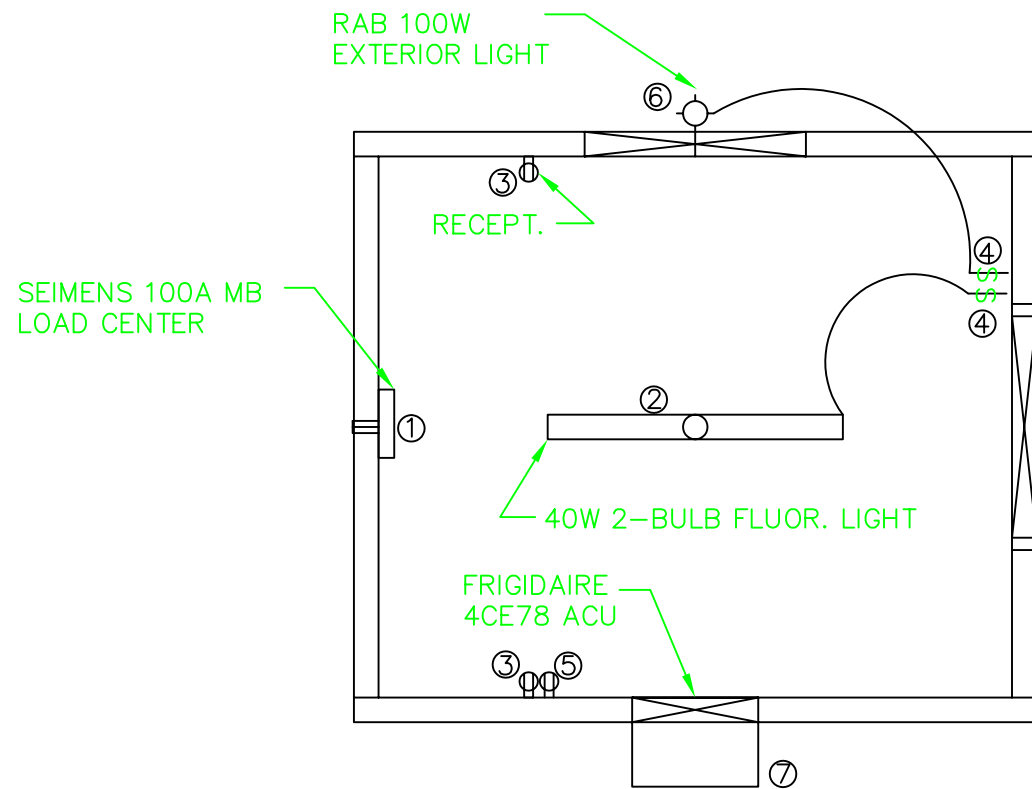
TITLE: ATM SHELTER  
LOCATION:  
FOR: TRANSACT PAYMENT SYSTEMS

BLDG. NO. B0853  
SCALE: 1/2"=1'

DWG NO. 0853B2  
SHEET 1 OF 8

DRAWN: MW DATE: 7/26/04  
REVISION: K.W.

CHECKED: DATE:  
DATE: 4-5-05



EL 11 ELECTRICAL PLAN

EQUIPMENT LIST:				
	QTY	MANUF.	PART NO.	DESCRIPTION
①	(1)	SIEMENS	G1224B110CU	100 AMP 12 SPACE 1 PHASE LOAD CENTER
②	(1)	LITHONIA	3GU85	INTERIOR LIGHT FIXTURE
③	(2)	EAGLE	CR20W	20A 125V RECEPTACLES
④	(2)	EAGLE	CS120W	20A 120V SWITCHES
⑤	(1)	EAGLE	1876-W	20A 250V BIPOLAR RECEPTACLES
⑥	(1)	RAB	VXBR100DG	EXTERIOR LIGHT FIXTURE
⑦	(1)	FRIGIDAIRE	4CE78	BTU 10,000/9800 AC/HEAT UNIT

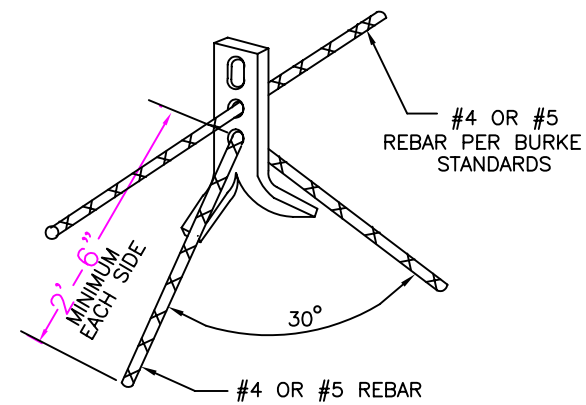
GENERAL ELECTRICAL NOTES:

- ALL WORK SHALL BE IN ACCORDANCE WITH NATIONAL ELECTRICAL CODE AND SHALL ALSO COMPLY WITH WITH APPLICABLE RULES AND REGULATIONS OF LOCAL AND STATE LAWS AND ORDINANCES.
- CIRCUITS 600V OR LESS SHALL USE COPPER CONDUCTORS ONLY: #10 AWG AND SMALLER SHALL BE SOLID, AND #8 AWG THRU #2 SHALL BE STRANDED WITH TYPE THHN/THWN 75-C INSULATION
- ROUTE CONDUITS TO SUIT EQUIPMENT AND BUILDING STRUCTURE. CONDUITS TO BE GALVANIZED EMT. FLEXIBLE CONDUIT MAY BE USED BETWEEN JUNCTION BOXES TO CONNECT MODULES TOGETHER. SURFACE MOUNT AND SUPPORT PER NEC.
- SEAL CONDUIT PENETRATIONS THRU WALLS WITH GROUT OR CAULK. USE A METHOD OF SEALING THAT IS UL APPROVED.
- ALL INTERIOR ELECTRICAL SYSTEM SHALL BE COMPLETELY AND EFFECTIVELY GROUNDED AS REQUIRED BY THE NATIONAL ELECTRICAL CODE. ALL METALLIC RACEWAYS SHALL BE MECHANICALLY AND ELECTRICALLY SECURE AT ALL BOXES, CABINETS, FITTINGS AND EQUIPMENT.
- COLOR CODE ALL CONDUCTORS AS REQUIRED BY THE NEC.
- ALL RACEWAYS WITH #10 OR #12 AWG PHASE CONDUCTORS SHALL BE PROVIDED WITH A PARITY SIZED GREEN EQUIPMENT GROUND CONDUCTOR. GROUND CONDUCTOR SHALL BE INSTALLED IN ENTIRE RACEWAY SYSTEM AND SHALL BE CONNECTED TO GROUND BUS IN PANELBOARD.

AC PANEL SCHEDULE							
100 AMP 120/240VAC 12 SPACE 1Ø MAIN BREAKER							
CKT #	DESCRIPTION	WIRE SIZE	AMP	AMP	WIRE SIZE	DESCRIPTION	CKT #
1	ACU	12	20(2P)	20	12	ATM RECEPT.	2
3	ACU	12	20(2P)	20	12	RIGHT RECEPT.	4
5	INT. LIGHT	12	20	20	12	SPARE	6
7	EXT. LIGHT	12	20	20	12	SPARE	8
9	SPACE					SPACE	10
11	SPACE					SPACE	12

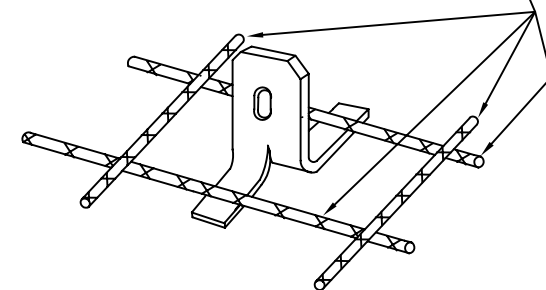
MINIMUM A.I.C. RATING OF CIRCUIT BREAKERS SHALL BE 10,000 @ 240V

REV. NO.	DESCRIPTION:	DATE:	BY:



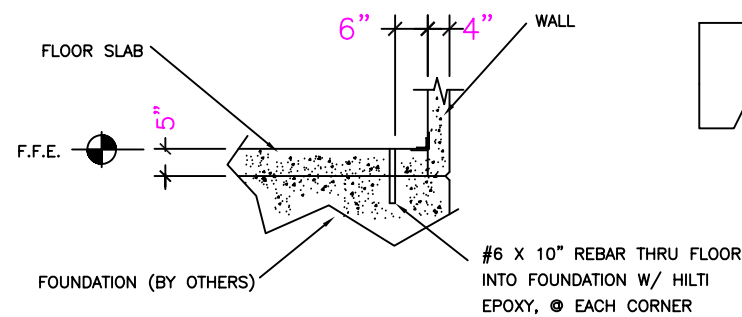
TYPICAL REINFORCING FOR 2-TON BURKE TYPE EDGE ANCHOR

REINFORCEMENT:  
LONGITUDINAL AND TRANSVERSE REBAR; SIZE AS SHOWN ON FLOOR AND (OR) ROOF PLAN.

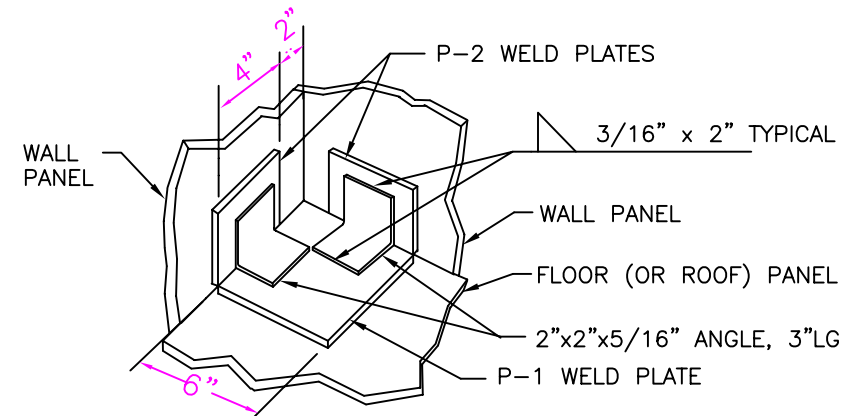


TYPICAL LIFTING INSERT FOR "FACE LIFT" APPLICATION

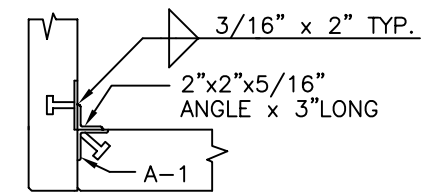
LIFTING INSERT DETAILS



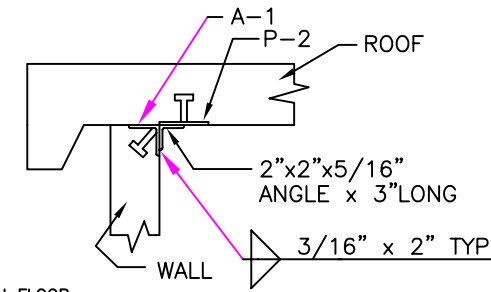
PINNING DETAILS



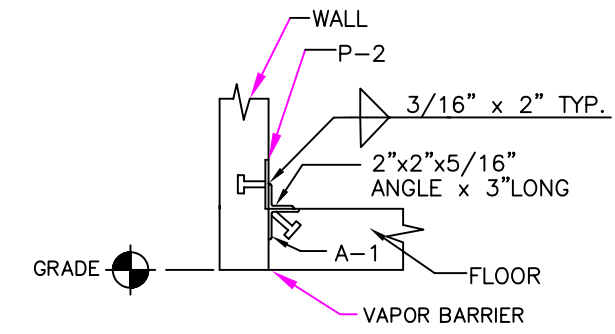
FLOOR/WALL CORNER PLATE ATTACHMENT (CEILING/WALL SIMILAR)



SECTION-WALL/WALL



SECTION-ROOF/WALL

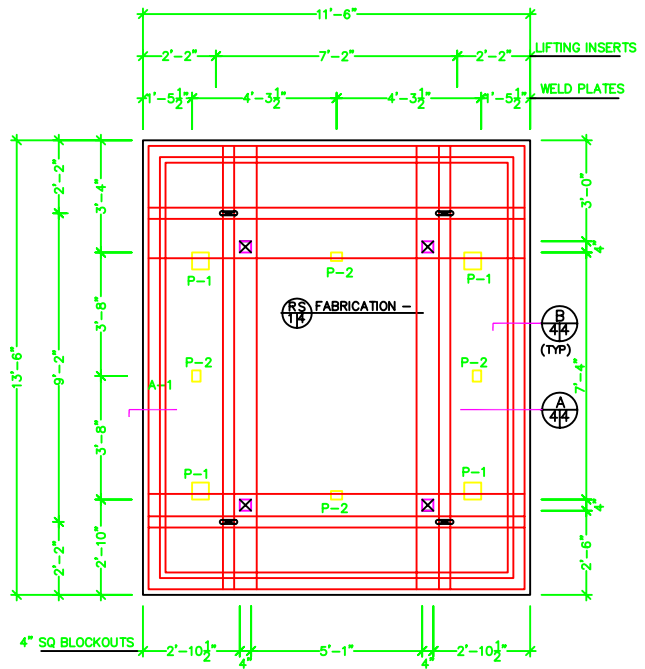


SECTION-FLOOR/WALL

CONNECTION DETAILS

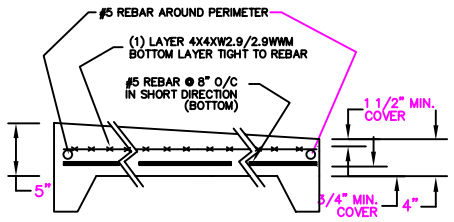
NOTE:  
ALL INTERIOR AND EXTERIOR JOINTS TO BE CAULKED W/ HILTI CS-2130 POLYURETHANE SEALANT

WELD PLATE AND ANGLE SCHEDULE			
QUAN.	MARK#	SIZE OF MATERIAL	STUD REQUIRED
	P-1	6"x 6"x 3/8" STL. PLATE	(4) 1/2" DIA x 3" LG.
	P-2	4"x 3"x 1/4" STL. PLATE	(2) 1/2" DIA x 3" LG.
	A-1	2-1/2"x 2-1/2"x 1/4" ANG. x 4" LONG	(2) 1/2" DIA x 3" LG.

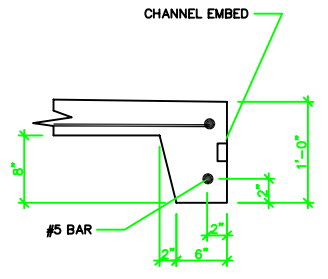


RS FABRICATION - 5"-4" THICK SLOPED ROOF SLAB

**REINFORCEMENT:**  
 (1) LAYER 4X4XW2.9/W2.9 WMM (MIN. LAP 8") (TOP)  
 (1) #5 REBAR EACH SIDE OF LIFTING INSERTS, EACH WAY  
 #5 REBAR @ 8" O/C IN BOTH DIRECTIONS (BOTTOM)



B ROOF SLAB SECTION  
4/4 NTS



B ROOF SLAB SECTION  
4/4 NTS

**AZ** PRECAST CONCRETE PRODUCTS  
 4451 8TH AVE. SOUTH, ST. PETERSBURG, FL 33711  
 TEL: (727) 321-6000 FAX: (727) 328-2234 WWW.AZPCRECAST.COM

TITLE: ATM SHELTER  
 LOCATION:  
 FOR: TRANSACT PAYMENT SYSTEMS

PROJECT NO.  
B0895

DWG NO.  
0895B6

DRAWN: MW  
DATE: 7/26/04

CHECKED:  
DATE: 4-5-05

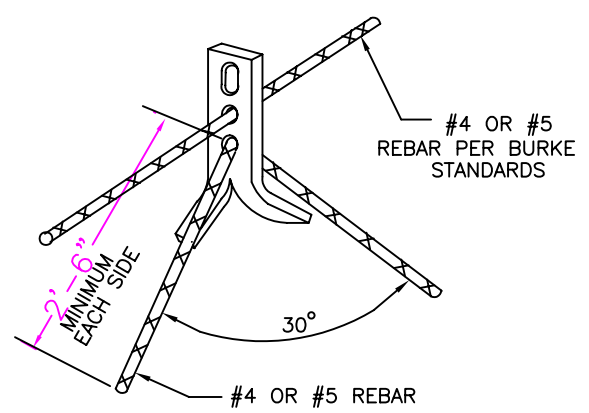
SIGNED:

SCALE: 1/2"=1'

SHEET 6 OF 8

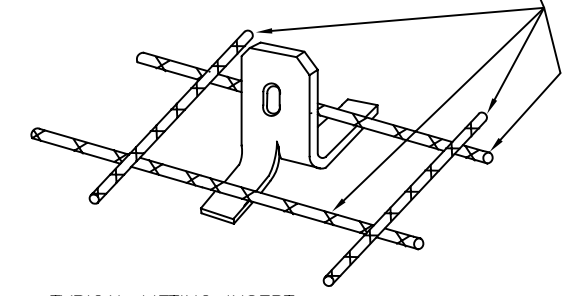
REVISION: K.W.

REV. NO.	DESCRIPTION:	DATE:	BY:



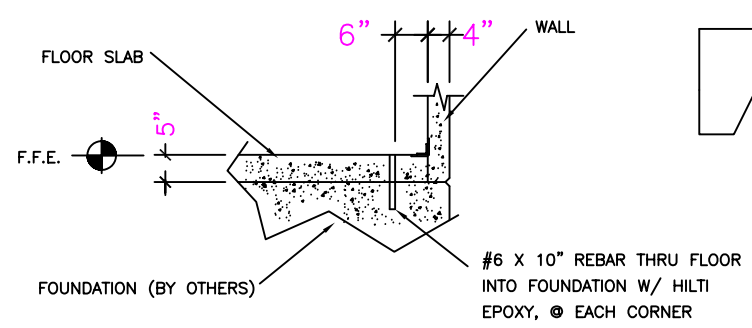
TYPICAL REINFORCING FOR 2-TON BURKE TYPE EDGE ANCHOR

REINFORCEMENT:  
LONGITUDINAL AND TRANSVERSE REBAR; SIZE AS SHOWN ON FLOOR AND (OR) ROOF PLAN.

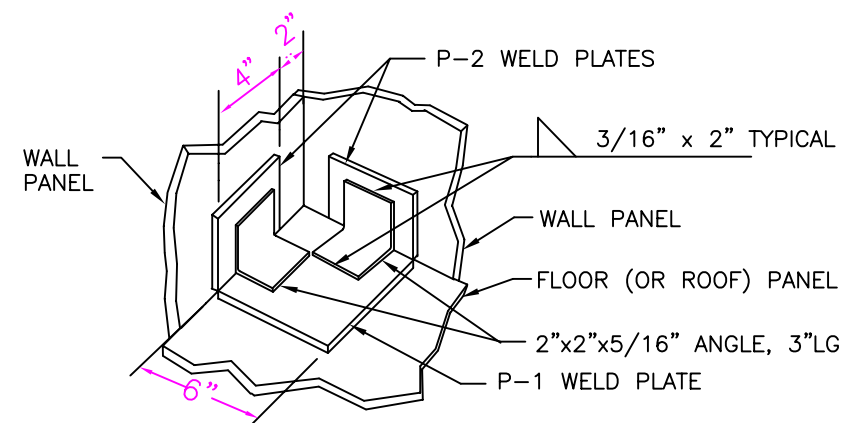


TYPICAL LIFTING INSERT FOR "FACE LIFT" APPLICATION

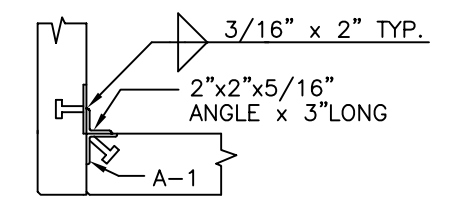
LIFTING INSERT DETAILS



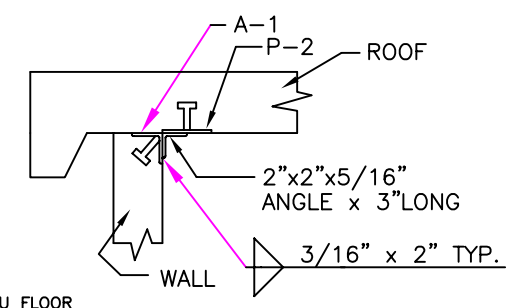
PINNING DETAILS



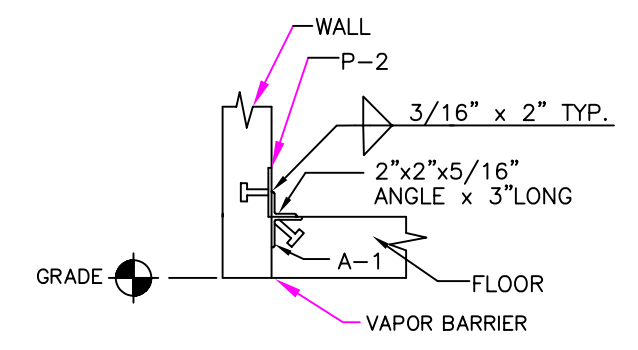
FLOOR/WALL CORNER PLATE ATTACHMENT (CEILING/WALL SIMILAR)



SECTION-WALL/WALL



SECTION-ROOF/WALL

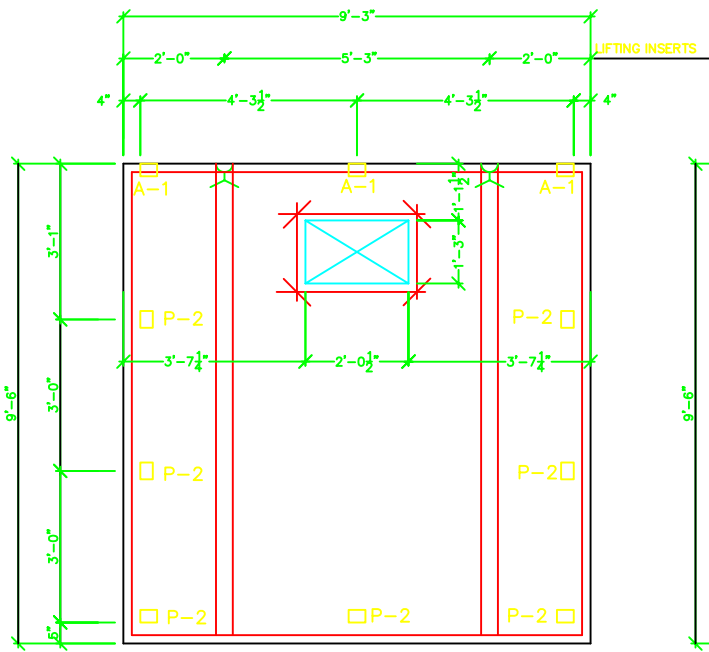


SECTION-FLOOR/WALL

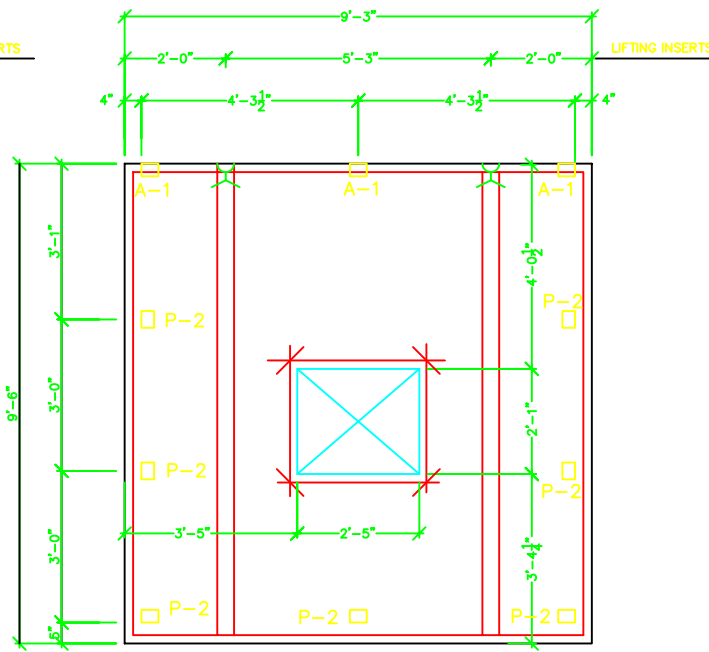
CONNECTION DETAILS

NOTE:  
ALL INTERIOR AND EXTERIOR JOINTS TO BE CAULKED W/ HILTI CS-2130 POLYURETHANE SEALANT

WELD PLATE AND ANGLE SCHEDULE			
QUAN.	MARK#	SIZE OF MATERIAL	STUD REQUIRED
	P-1	6"x 6"x 3/8" STL. PLATE	(4) 1/2" DIA x 3" LG.
	P-2	4"x 3"x 1/4" STL. PLATE	(2) 1/2" DIA x 3" LG.
	A-1	2-1/2"x 2-1/2"x 1/4" ANG. x 4" LONG	(2) 1/2" DIA x 3" LG.



**BW** FABRICATION - 4" THICK WALL PANEL

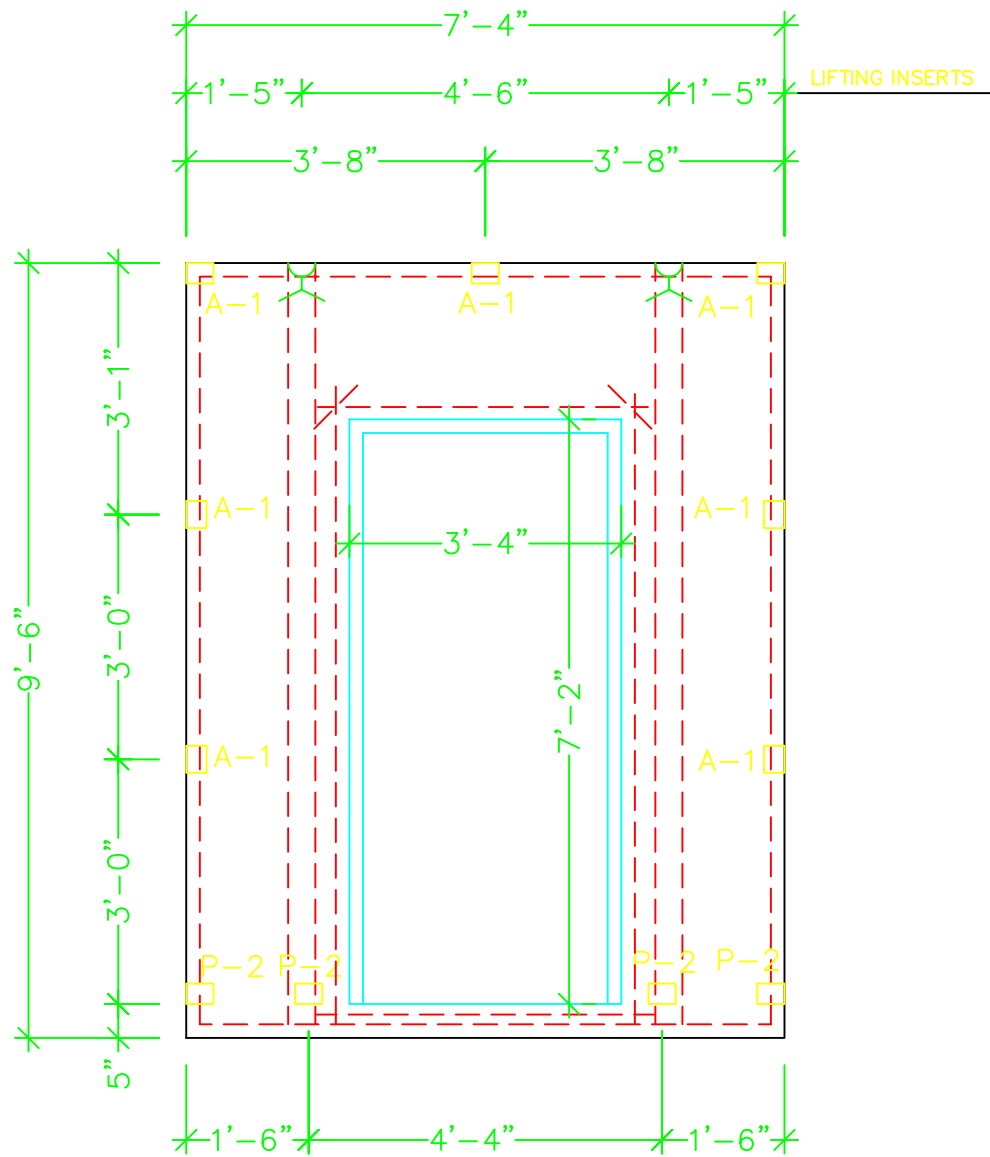


**FW** FABRICATION - 4" THICK WALL PANEL

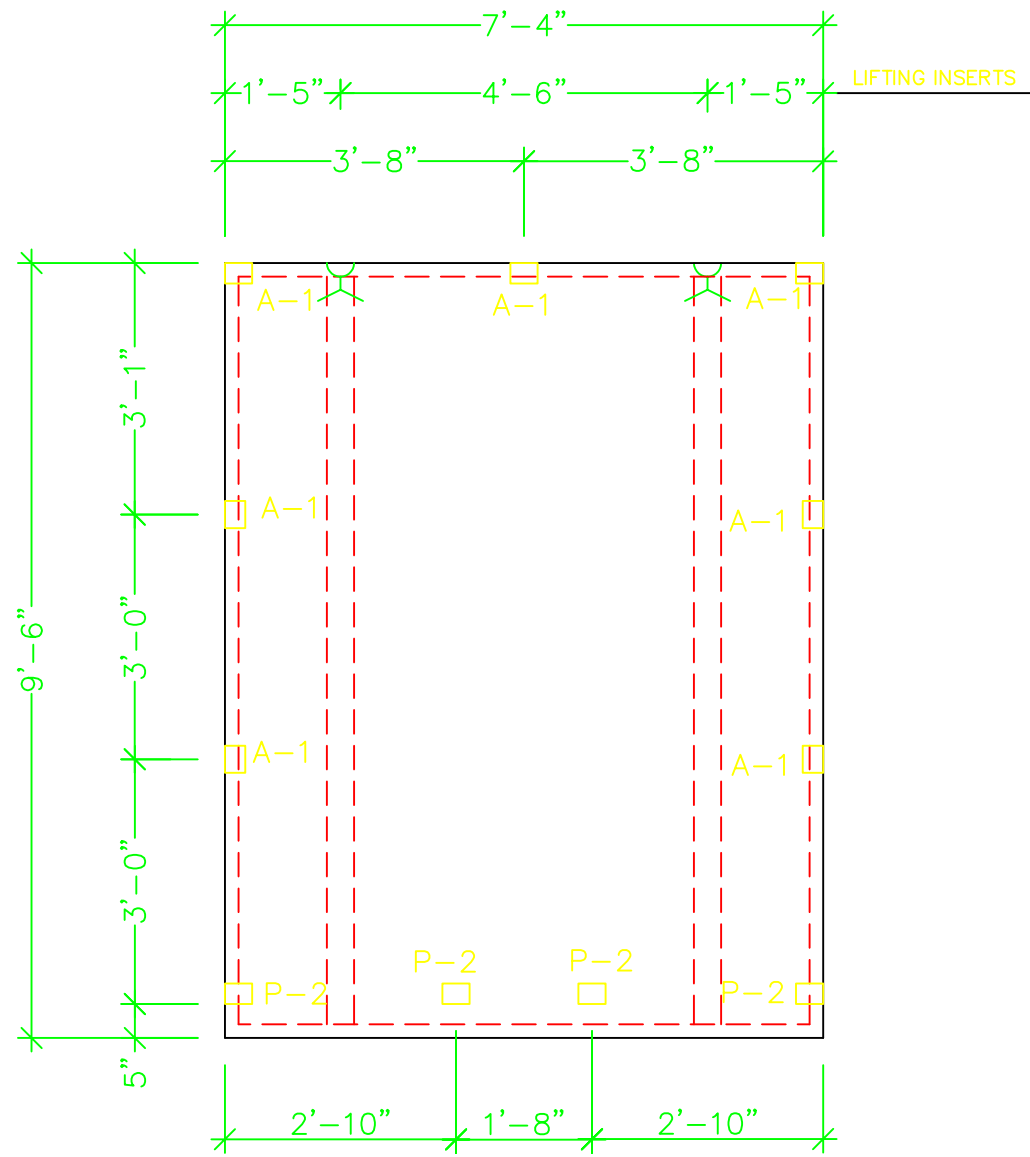
**AZ** PRECAST CONCRETE PRODUCTS  
 4451 8TH AVE. SOUTH, ST. PETERSBURG, FL 33711  
 TEL: (727) 321-6000 FAX: (727) 328-2234 WWW.AZPCRECAST.COM

TITLE: ATM SHELTER  
 LOCATION:  
 FOR: TRANSACT PAYMENT SYSTEMS

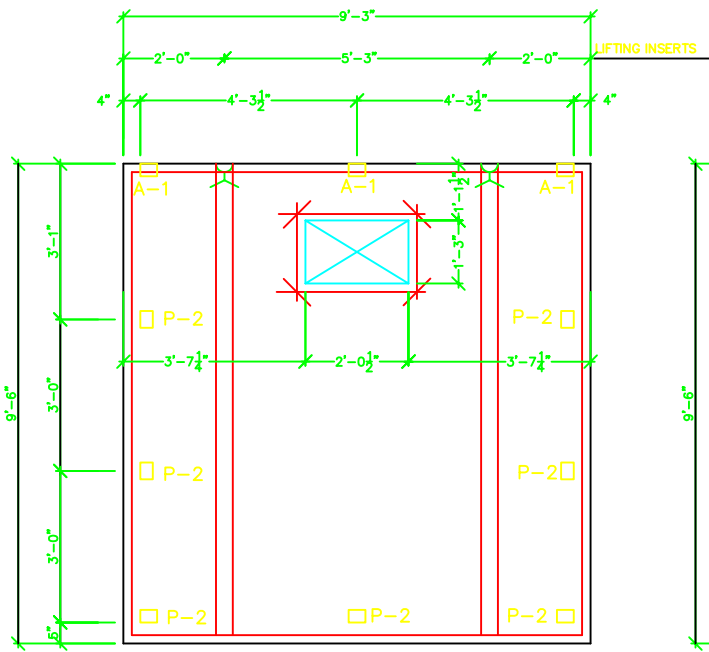
PROJECT NO. B0895	DWG NO. 0895B4	DRAWN: MW	DATE: 2/2/05	CHECKED:	DATE:
SCALE: 1/2"=1'	SHEET 4 OF 8	REVISION: K.W.	DATE: 4-5-05		



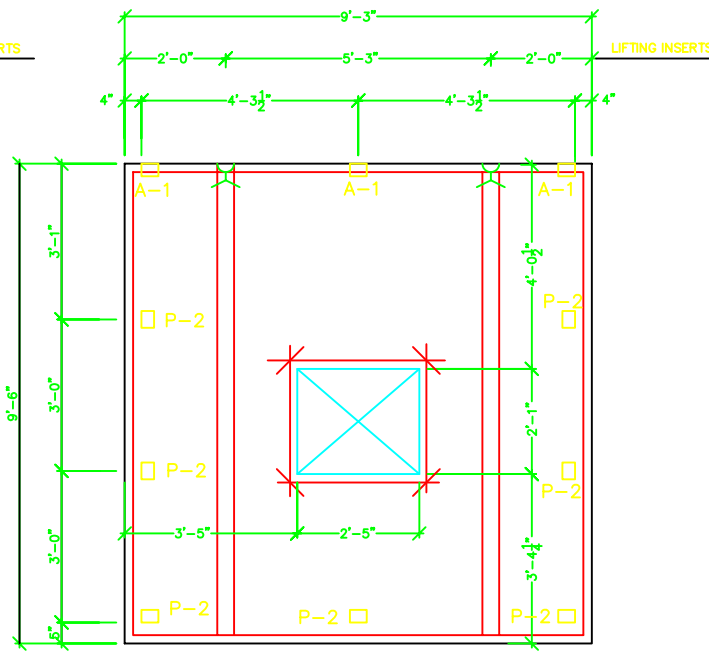
**LW**  
1/6 FABRICATION – 4" THICK WALL PANEL



**RW**  
1/6 FABRICATION – 4" THICK WALL PANEL



**BW** FABRICATION - 4" THICK WALL PANEL



**FW** FABRICATION - 4" THICK WALL PANEL

**AZ** PRECAST CONCRETE PRODUCTS  
 4451 8TH AVE. SOUTH, ST. PETERSBURG, FL 33711  
 TEL: (727) 321-6000 FAX: (727) 328-2234 WWW.AZPRECAST.COM

TITLE: ATM SHELTER  
 LOCATION:  
 FOR: TRANSACT PAYMENT SYSTEMS

PROJECT NO.  
 B0895

DWG NO.  
 0895B4

DRAWN: MW  
 DATE: 2/2/05

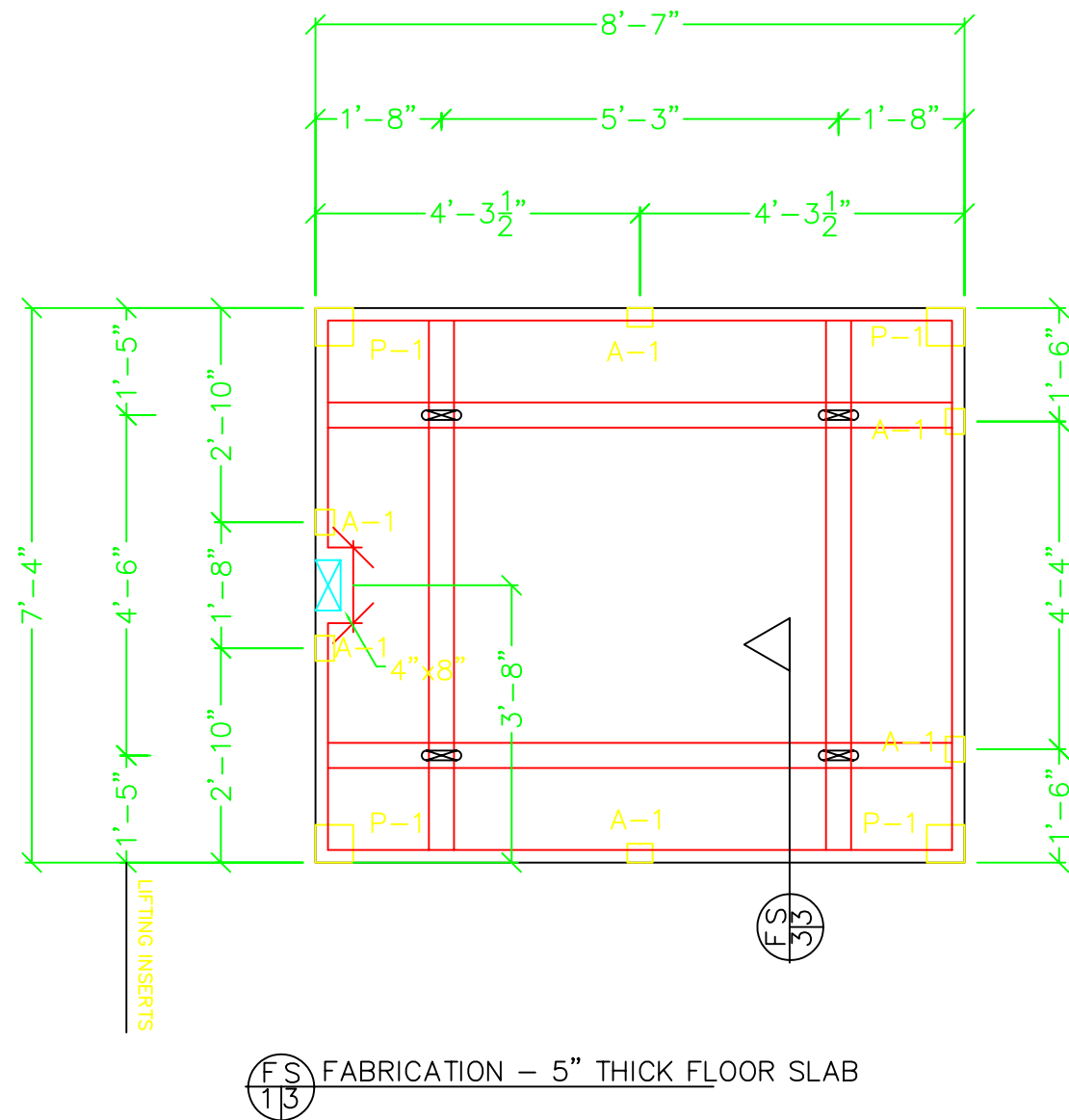
CHECKED: DATE:

SCALE: 1/2"=1'

SHEET 4 OF 8

REVISION: K.W.

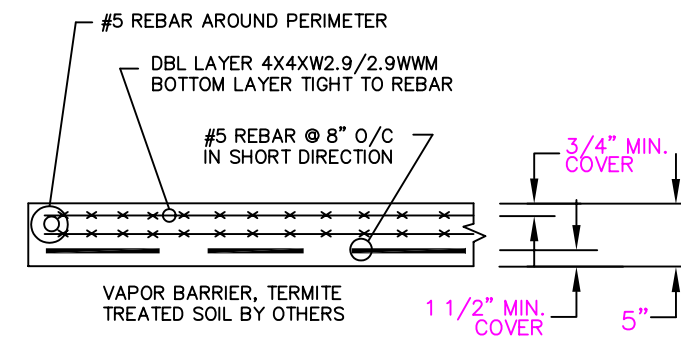
DATE: 4-5-05



**REINFORCEMENT:**  
 DBL. LAYER 4X4XW2.9/W2.9 WWM (MIN. LAP 8")  
 (1) #5 REBAR EACH SIDE OF LIFTING INSERTS, EACH WAY  
 #5 REBAR @ 8" O/C IN SHORT DIRECTION

**NOTE:**  
 FLOOR SLAB DESIGN IS BASED ON A FOUNDATION SYSTEM (PROVIDED BY OTHERS) THAT WILL ADEQUATELY SUPPORT THE BUILDING AND FLOOR AROUND THE ENTIRE PERIMETER OF THE FLOOR SLAB

FOUNDATION TO MEET DESIGN CRITERIA ON SHEET 1 AND ALL OTHER APPLICABLE CODES.

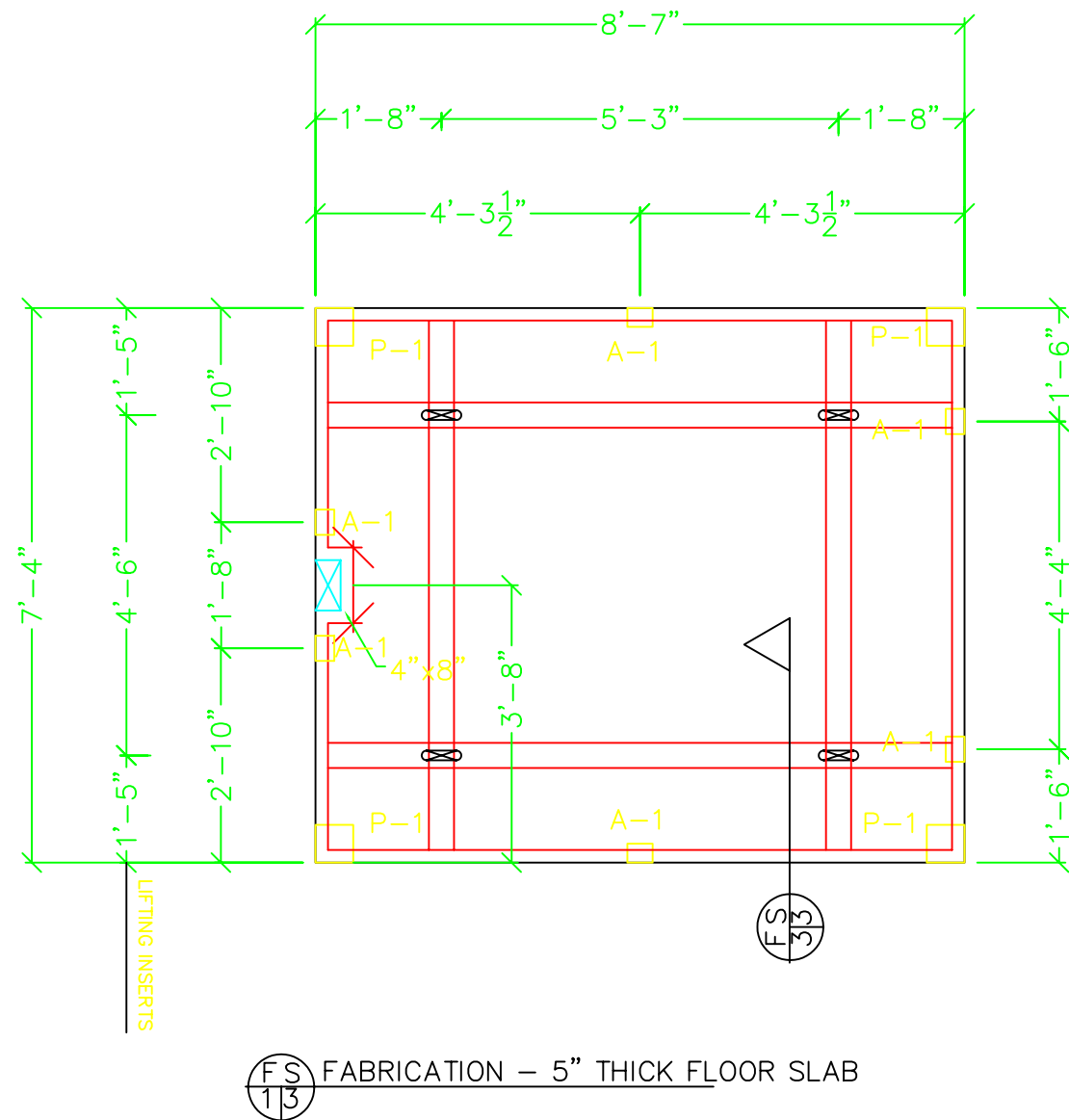


**AZ** PRECAST CONCRETE PRODUCTS  
 4451 8TH AVE. SOUTH, ST. PETERSBURG, FL 33711  
 TEL: (727) 321-6000 FAX: (727) 328-2234 WWW.ATOZPRECAST.COM

TITLE: ATM SHELTER  
 LOCATION:  
 FOR: TRANSACT PAYMENT SYSTEMS

PROJECT NO. B0895	DWG NO. 0895B3	DRAWN: MW	DATE: 7/26/04	CHECKED:	DATE:
SCALE: 1/2"=1'	SHEET 3 OF 8	REVISION: K.W.	DATE: 4-5-05		

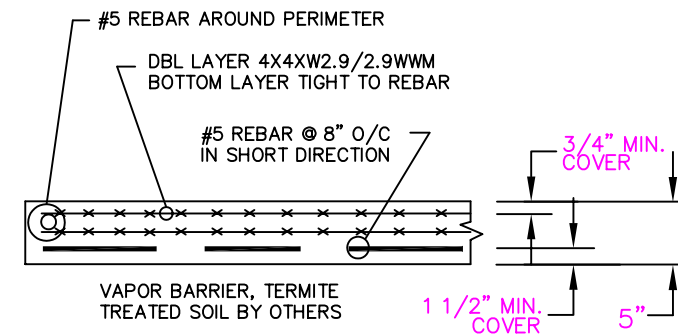
SIGNED:



**REINFORCEMENT:**  
 DBL. LAYER 4X4XW2.9/W2.9 WWM (MIN. LAP 8")  
 (1) #5 REBAR EACH SIDE OF LIFTING INSERTS, EACH WAY  
 #5 REBAR @ 8" O/C IN SHORT DIRECTION

**NOTE:**  
 FLOOR SLAB DESIGN IS BASED ON A FOUNDATION SYSTEM (PROVIDED BY OTHERS) THAT WILL ADEQUATELY SUPPORT THE BUILDING AND FLOOR AROUND THE ENTIRE PERIMETER OF THE FLOOR SLAB

FOUNDATION TO MEET DESIGN CRITERIA ON SHEET 1 AND ALL OTHER APPLICABLE CODES.

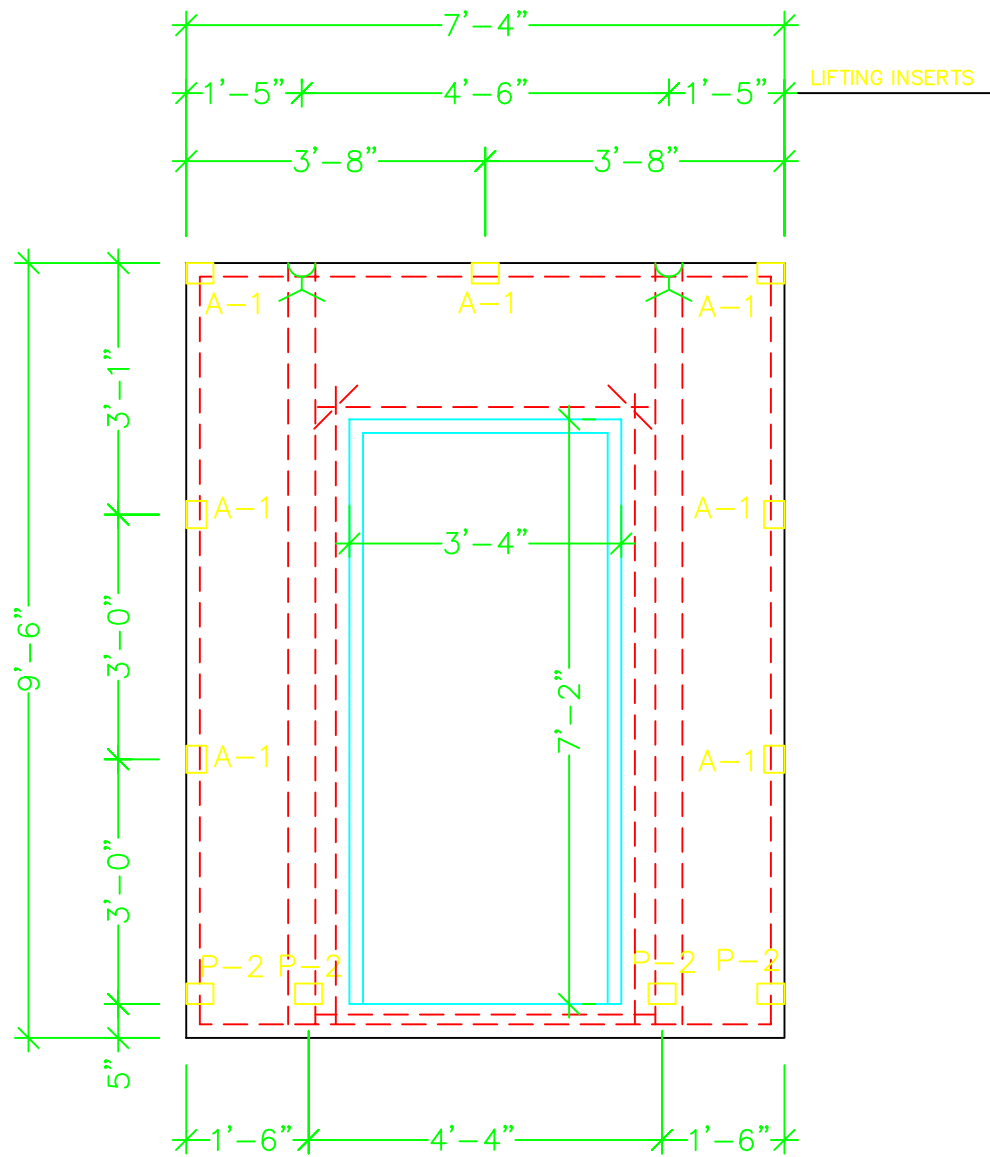


**AZ** PRECAST CONCRETE PRODUCTS  
 4451 8TH AVE. SOUTH, ST. PETERSBURG, FL 33711  
 TEL: (727) 321-6000 FAX: (727) 328-2234 WWW.ATOZPRECAST.COM

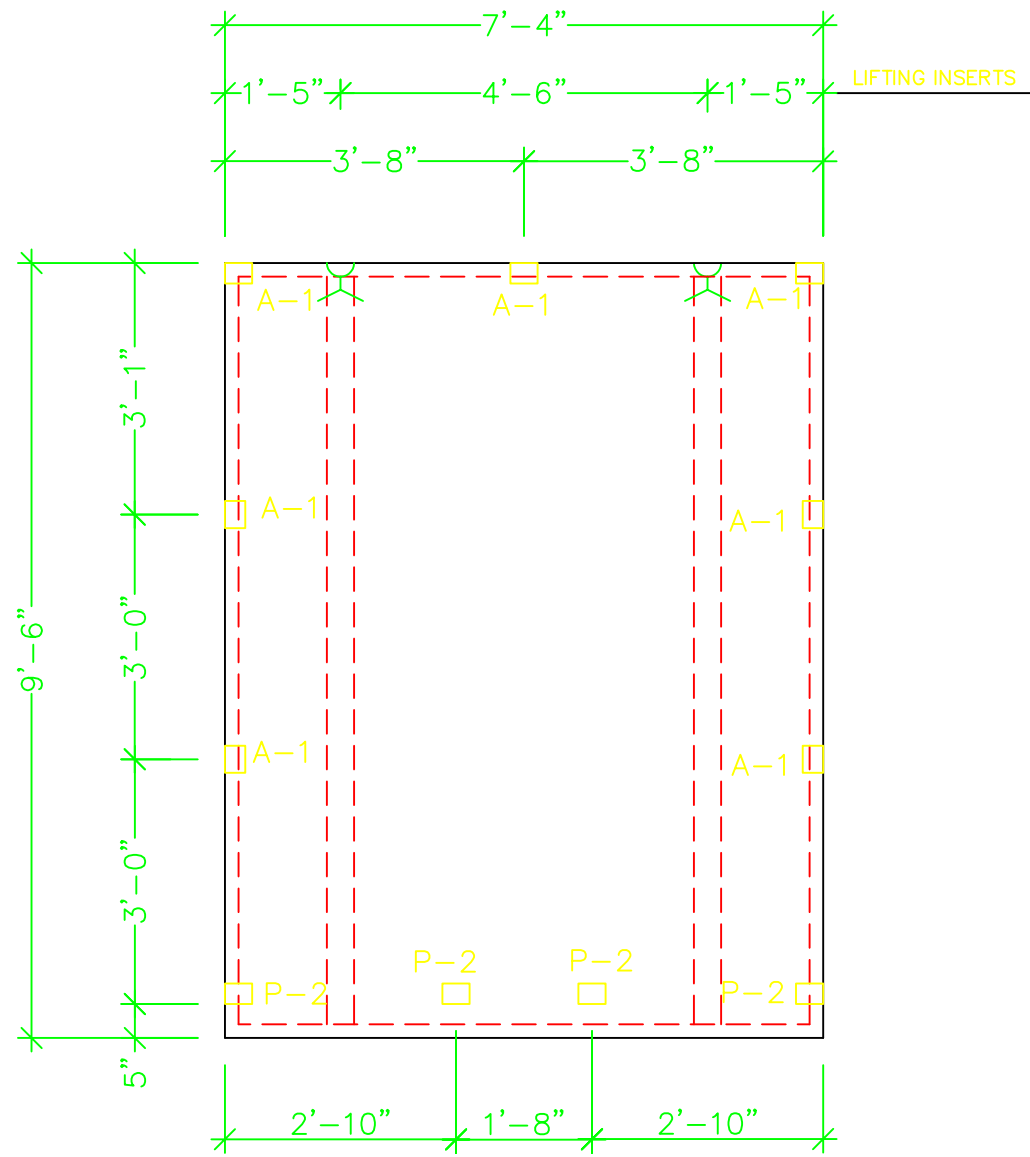
TITLE: ATM SHELTER  
 LOCATION:  
 FOR: TRANSACT PAYMENT SYSTEMS

PROJECT NO. B0895	DWG NO. 0895B3	DRAWN: MW	DATE: 7/26/04	CHECKED:	DATE:
SCALE: 1/2"=1'	SHEET 3 OF 8	REVISION: K.W.	DATE: 4-5-05		

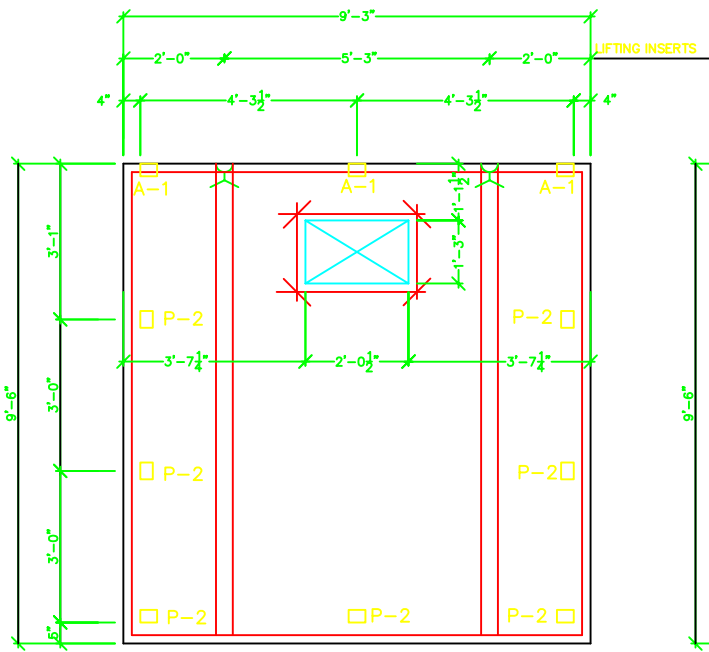
SIGNED:



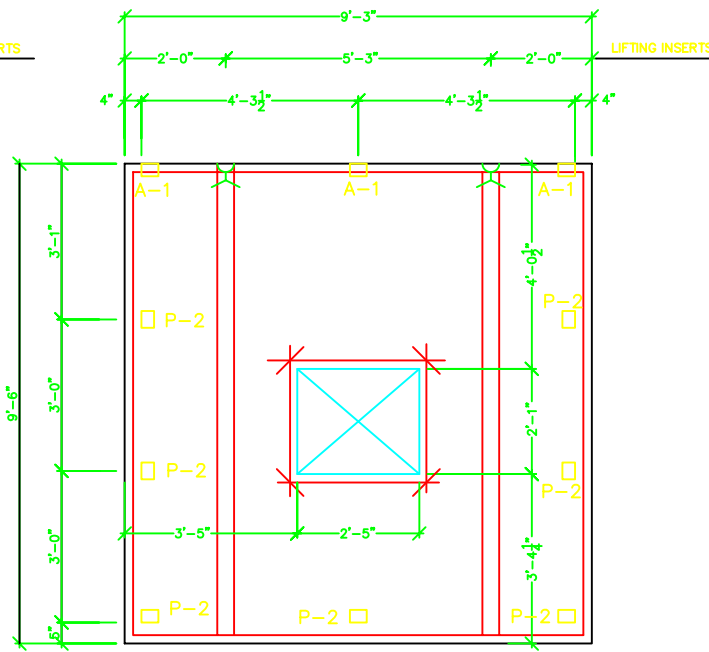
**LW**  
1/6 FABRICATION – 4" THICK WALL PANEL



**RW**  
1/6 FABRICATION – 4" THICK WALL PANEL



**BW** FABRICATION - 4" THICK WALL PANEL



**FW** FABRICATION - 4" THICK WALL PANEL

**AZ** PRECAST CONCRETE PRODUCTS  
 4451 8TH AVE. SOUTH, ST. PETERSBURG, FL 33711  
 TEL: (727) 321-6000 FAX: (727) 328-2234 WWW.AZPCRECAST.COM

TITLE: ATM SHELTER  
 LOCATION:  
 FOR: TRANSACT PAYMENT SYSTEMS

PROJECT NO.  
 B0895

DWG NO.  
 0895B4

DRAWN: MW  
 DATE: 2/2/05

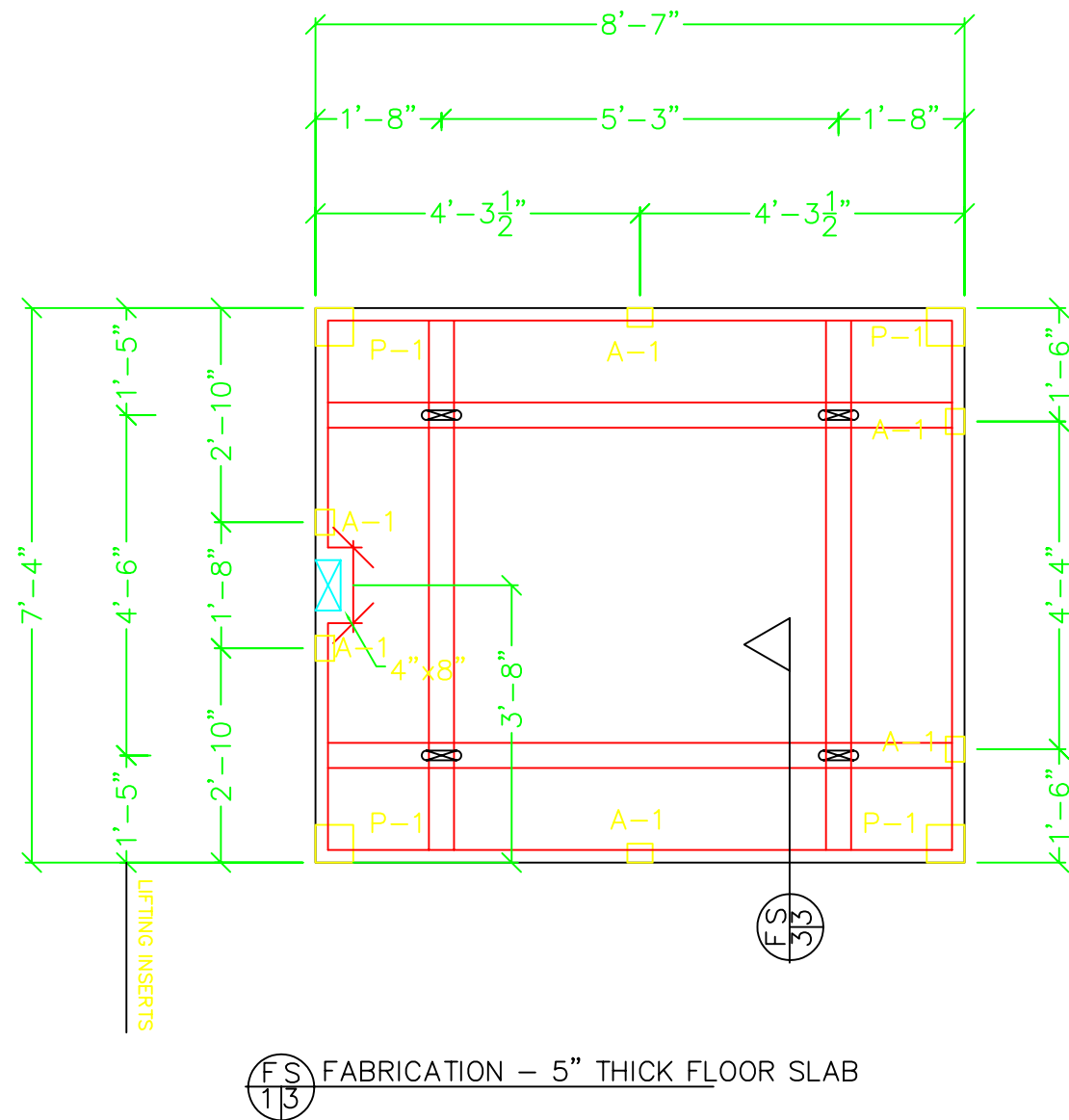
CHECKED: DATE:

SCALE: 1/2"=1'

SHEET 4 OF 8

REVISION: K.W.

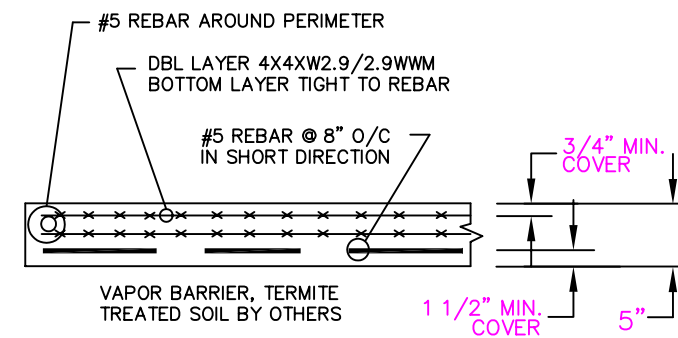
DATE: 4-5-05



**REINFORCEMENT:**  
 DBL. LAYER 4X4XW2.9/W2.9 WWM (MIN. LAP 8")  
 (1) #5 REBAR EACH SIDE OF LIFTING INSERTS, EACH WAY  
 #5 REBAR @ 8" O/C IN SHORT DIRECTION

**NOTE:**  
 FLOOR SLAB DESIGN IS BASED ON A FOUNDATION SYSTEM (PROVIDED BY OTHERS) THAT WILL ADEQUATELY SUPPORT THE BUILDING AND FLOOR AROUND THE ENTIRE PERIMETER OF THE FLOOR SLAB

FOUNDATION TO MEET DESIGN CRITERIA ON SHEET 1 AND ALL OTHER APPLICABLE CODES.



**AZ** PRECAST CONCRETE PRODUCTS  
 4451 8TH AVE. SOUTH, ST. PETERSBURG, FL 33711  
 TEL: (727) 321-6000 FAX: (727) 328-2234 WWW.ATOZPRECAST.COM

TITLE: ATM SHELTER  
 LOCATION:  
 FOR: TRANSACT PAYMENT SYSTEMS

PROJECT NO. B0895	DWG NO. 0895B3	DRAWN: MW	DATE: 7/26/04	CHECKED:	DATE:
SCALE: 1/2"=1'	SHEET 3 OF 8	REVISION: K.W.	DATE: 4-5-05		

SIGNED: